



AICA® Sunmica®
JAPANESE TECHNOLOGY MAKE IN INDIA

AICA LAMINATES INDIA PVT. LTD.
(A GROUP COMPANY OF AICA KOGYO COMPANY LTD. JAPAN)

FACTORY
Plot No. 23 to 26 & 45 to 48, Sector No-5, IIE- Pant Nagar Industrial Estate,
Rudrapur-263153 (U.S. Nagar) Uttarakhand.

HEAD OFFICE
Jet Air House, 3rd & 4th Floor, 13 Community Centre, Yusuf Sarai, New Delhi - 110049, India
✉ sunmica@aicaindia.in 🌐 www.aicasunmica.com

AICA®
JAPANESE TECHNOLOGY

UltraShield⁺
Exterior HPL

UNMATCHED PROTECTION
UNRIVALED STYLE

**INDIAN
TRUSTED
BRAND**



UltraShield⁺
Exterior HPL

UNMATCHED PROTECTION
UNRIVALED STYLE

AICA®
JAPANESE TECHNOLOGY
Sunmica®
MAKE IN INDIA

US



BUILT FOR OUTDOOR TOUGHNESS

Ultra Shield Laminates offer more than just surface coverage, they provide a protective layer for your exterior spaces. Combining aesthetics with innovative technology, Ultra Shield makes it easy to create beautiful, durable spaces that reflect your lifestyle. Ultra Shield Exterior Laminates provide a perfect blend of resilience and beauty, transforming your outdoor environment into a space that's both functional and visually stunning.



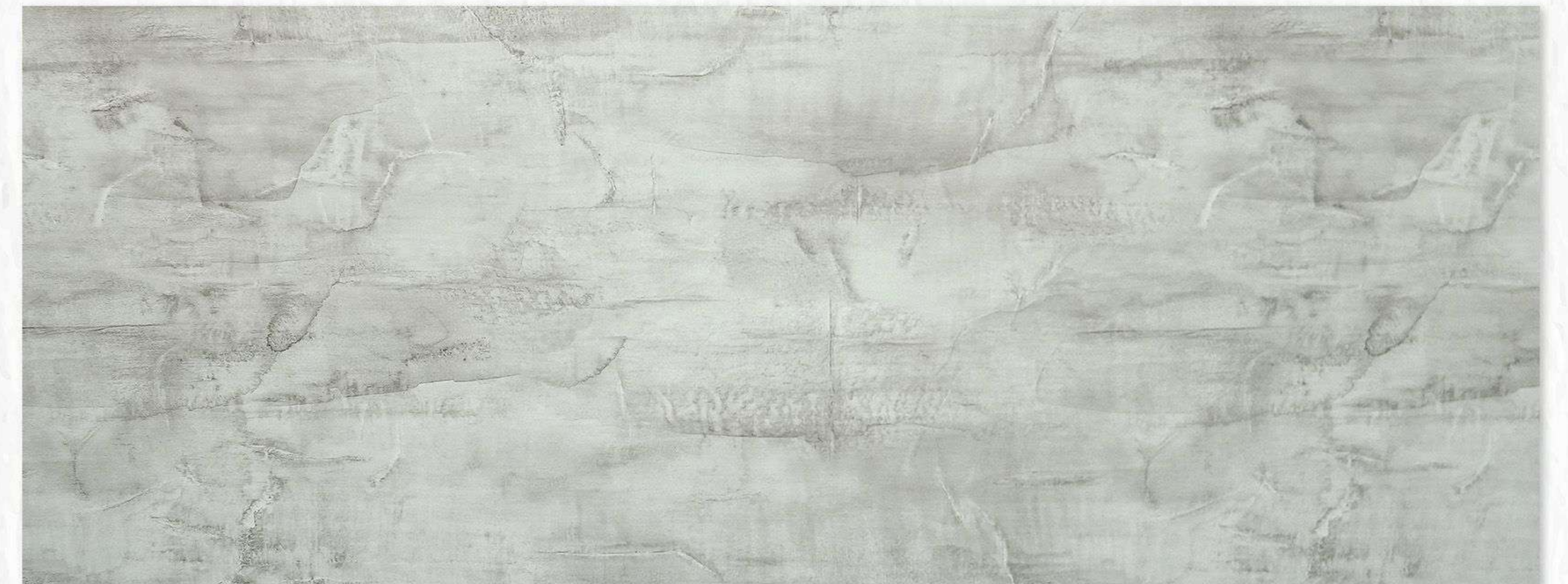
WP 157 Novacinto Pine

(Size: 8'x4', Thickness: 6mm)

UltraShield⁺

Exterior HPL

Simple sense of eloquence. Now your outdoor wall will have its own uniqueness.



Y 699 Grey Side Walk

(Size: 8'x4', Thickness: 6mm)



ABOUT US



Aica Kogyo Company Limited was established in 1936 in Kiyosu Aichi, Japan. We are the cornerstone of excellence in chemical materials, decorative laminates, and housing materials.

Aica Laminates India Pvt. Ltd. has been operating since its establishment in 2011. Today, it is one of the finest Japanese companies in India, manufacturing high-pressure and industrial laminates.

Our own brand, 'Sunmica,' a well-known name in the laminate industry, has become synonymous with the product itself. We will continue to create new value by blending Japanese and Indian technologies.

* Sunmica is a registered trademark of AICA LAMINATES INDIA PVT. LTD

1965 1978 2005 2011

Factory was setup in AKURDI Pune in 1965 in collaboration with Formica International

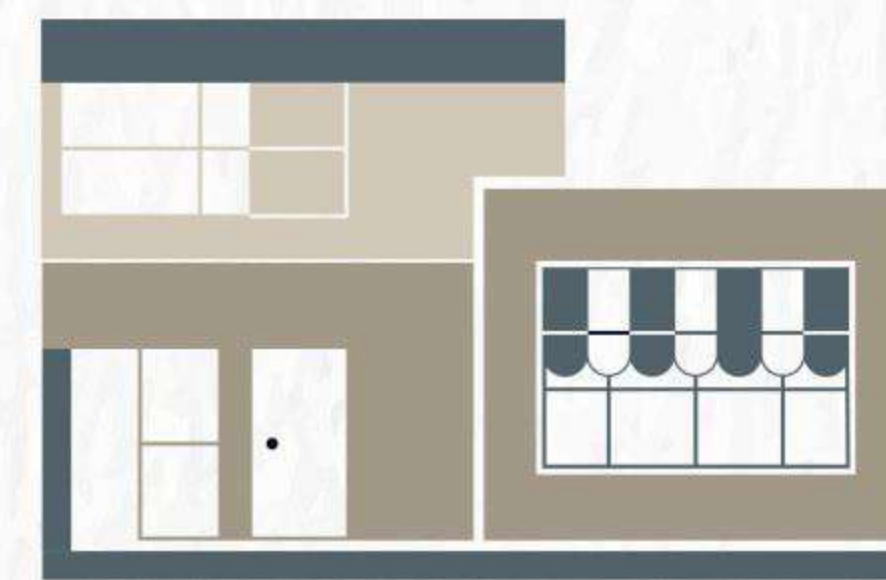
The Bombay Burmah Trading Corporation Limited took over & revamped business with emphasis on the premium segment & industrial laminates with impetus on copper clad and glass epoxy laminates

Pune operations shifted to Rudrapur with double production capacity

It was taken over by Aica Kogyo Company Limited, 2011 & is now known as Aica Laminates India Pvt. Ltd.

ULTRA SHIELD APPLICATION ZONE

Ultra Shield Exterior Laminates are ideal for outdoor applications, providing long-lasting and stylish protection against extreme weather. They are especially well-suited for areas exposed to tough environmental conditions. Our laminates are perfect for outdoor use, offering durable, stylish protection against harsh weather conditions. But it is best for these deployment areas.

**RESIDENCES****BUILDING FACADES****HOTELS****SHOWROOMS****SHOPPING MALLS****UNMATCHED QUALITY AND PRECISION**

AICA Laminates holds industry-recognized certifications and accreditations, ensuring adherence to stringent quality standards, environmental sustainability, and safety regulations, fostering trust and confidence in their products worldwide.



Green Label Singapore is an environmental certification that recognizes products meeting eco-friendly standards in sustainability & resource conservation.



The Green Pro certificate indicates environmental friendly products meet standards for sustainability, energy efficiency, and reduced ecological impact.



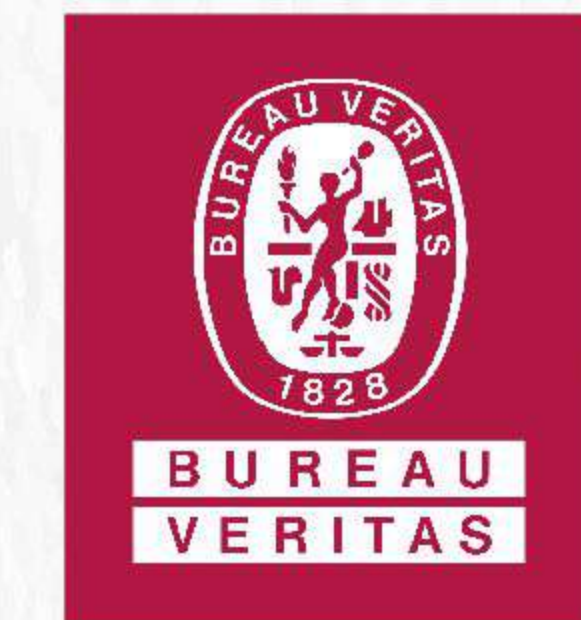
The IGBC certificate signifies adherence to green building standards, promoting sustainable practices in construction & environmental responsibility.

**ISO 14001-2015**

ISO 14001:2015 is a global standard for environmental management systems, guiding organizations in improving environmental performance & sustainability.



The FSC certificate ensures that forest products are sourced sustainably, protecting forests, wildlife, and communities while promoting responsible management.

**ISO 9001-2015**

ISO 9001:2015 is a global standard for environmental management systems, guiding organizations to enhance and sustain environmental performance.



Product Description

AICA Sunmica's Outdoor Wall Cladding Compact Laminate grade is specially formulated laminate for exterior application. This product meets all properties as per BS EN 438-6:2016. This grade is tested according to EN 438-2.19 & EN 438-2:29 for weather resistant properties as well to EN 13501-1 for fire resistant properties required for exterior grade application.

AICA Sunmica's Outdoor laminate is made with special type of synthetic polymers with acrylic coating technique that provides superior weather ability, excellent UV-absorbance and heat resistant performance.

Ultra Shield exterior laminates, crafted using advanced Japanese technology, offer superior protection and durability for outdoor surfaces. These high-performance laminates are designed to withstand harsh weather conditions, UV rays, and environmental wear, ensuring long-lasting color and texture. Ultra Shield provides a reliable solution for preserving the aesthetic and structural integrity of buildings and outdoor spaces, making it ideal for modern architectural applications.



BEST FEATURES

Ultra Shield Laminate is engineered to offer an exceptional balance of strength and beauty, making it the ultimate choice for any space. Its standout feature is its incredible design, built to withstand the rigidity of daily life.

These features make Ultra Shield a strong contender for anyone looking to balance durability.



Weather Resistant

AICA outdoor wall cladding is weather resistant and complies the property as per BS EN 438-6:2016 standard.



Fire Resistant

AICA outdoor wall cladding is Fire resistant and meets B-s2,d0 class according to EN13501-1 fire classification.



Mechanical Properties

AICA outdoor wall cladding is tested for impact resistant, flexural strength, abrasion resistance, chemical shock resistance and modules of elasticity and found to comply with BS EN 438-6: 2016 Standard.



UV Resistant

AICA outdoor wall cladding is UV resistant and complies the property as per BS EN 438-6:2016 standard.



Corrosion Free

Being a nature of composition, AICA outdoor wall cladding is corrosion free.



WOOD GRAINS

Wood grains

U.S.

PINE

Pine



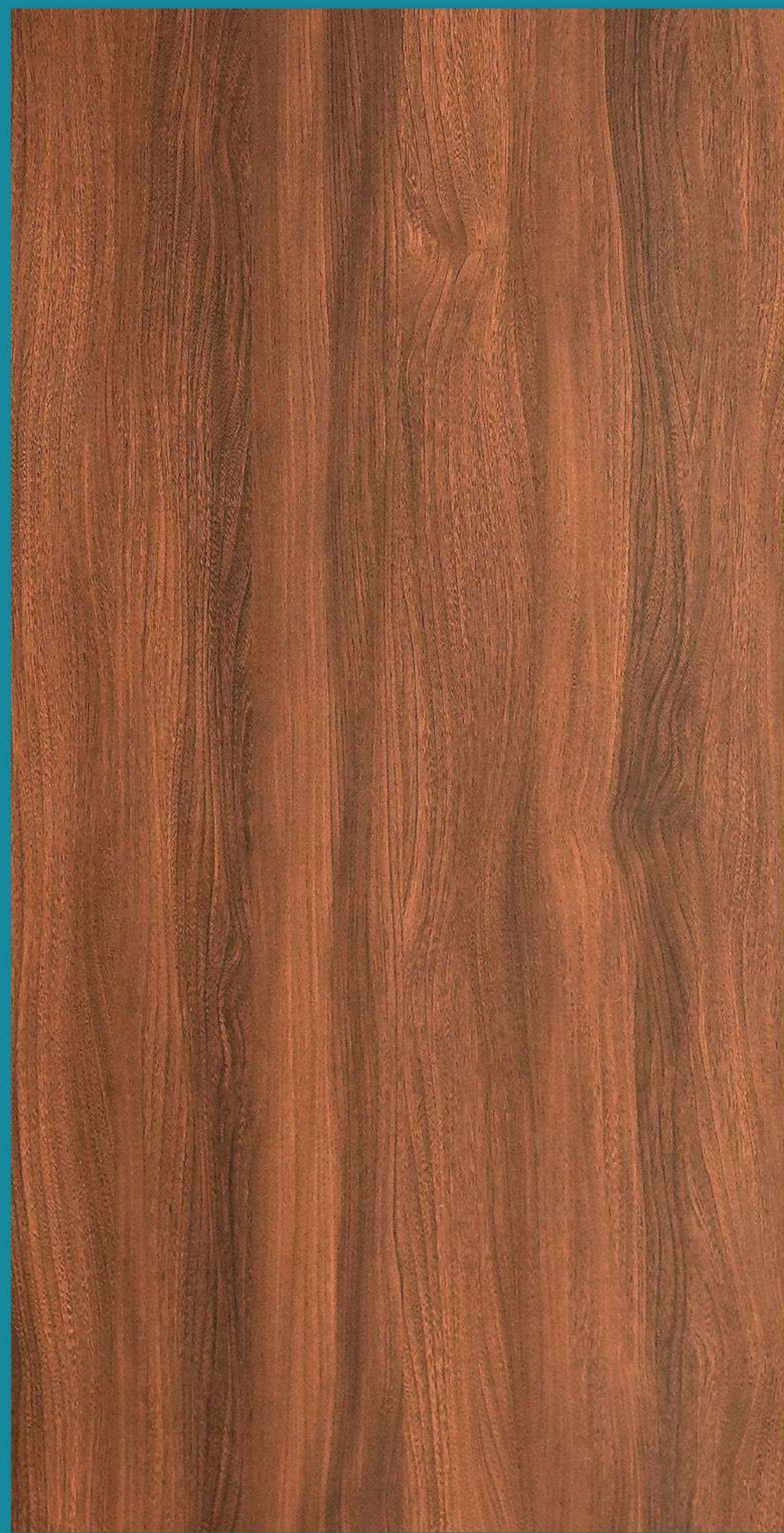
WP 157
NOVACINTO PINE



U.S.

ELM

ELM



NEW WP 205
ROCHE ELM



UltraShield⁺
EXTERIOR HPL

UltraShield⁺
EXTERIOR HPL

WALNUT

Walnut



New WP 207
TWO-TONE WALNUT NATURAL



New WP 253
PASTORAL LIGHT



New WP 254
PASTORAL DARK

UltraShield⁺
Exterior HPL



New WP 49
WINCHESTER WALNUT

UltraShield⁺
Exterior HPL



WP 54
WALNUT MARINO

UltraShield⁺
Exterior HPL



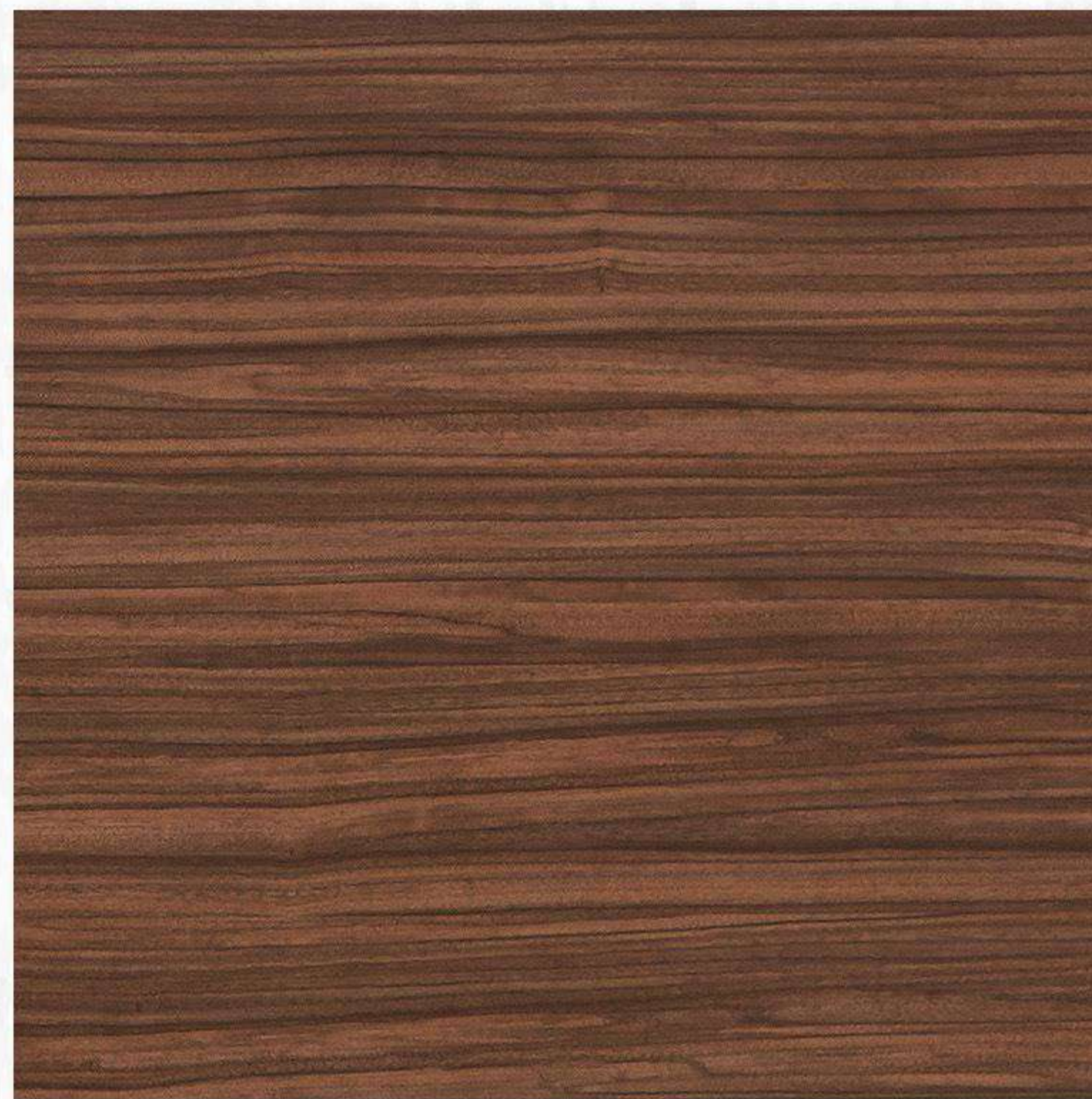
WP 124
PRINCESS WALNUT

UltraShield⁺
Exterior HPL



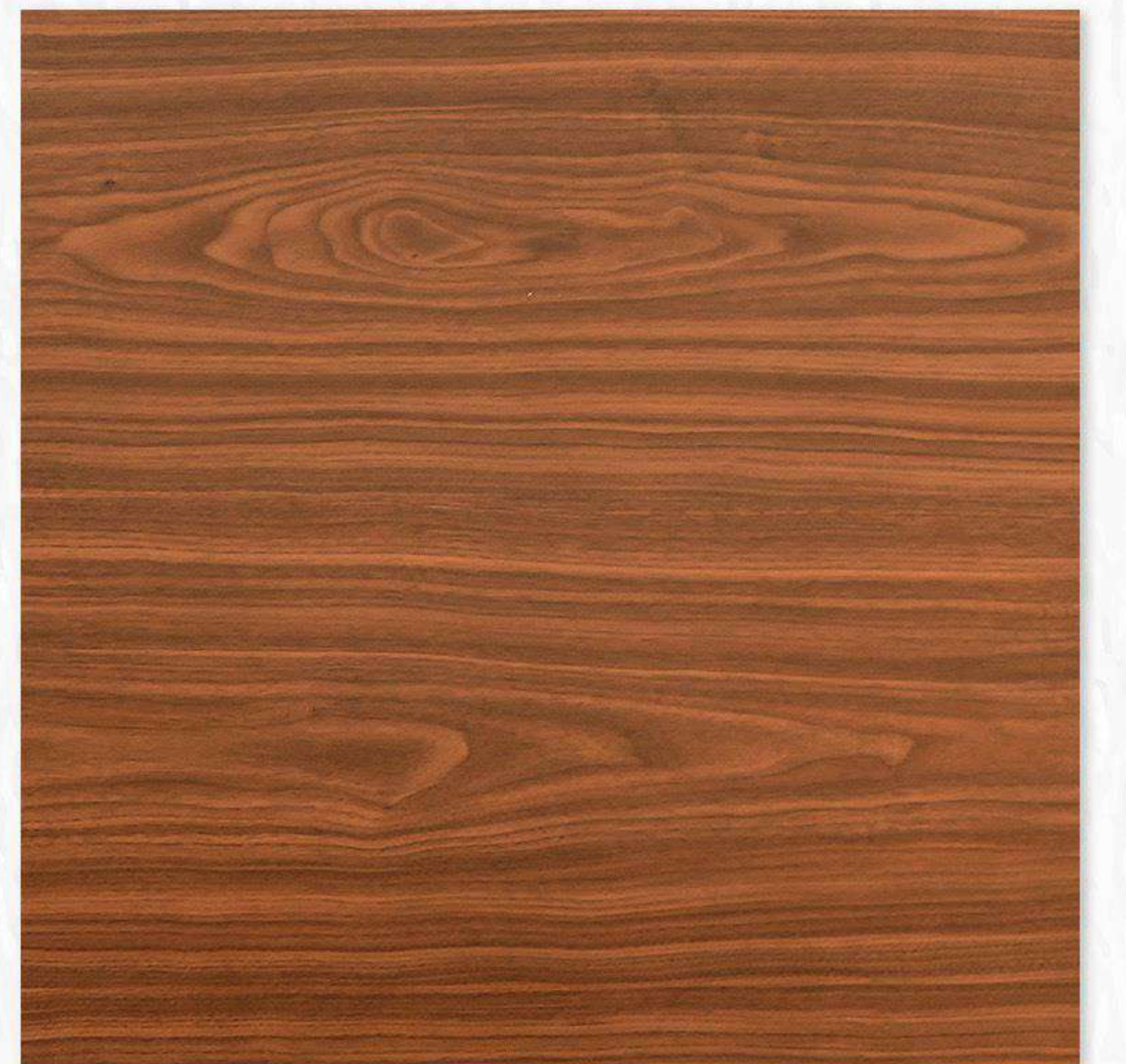
New WP 63
NOCE DA VINCI II

UltraShield⁺
Exterior HPL



E 756/ 1756
LORRAINE WALNUT

UltraShield⁺
Exterior HPL

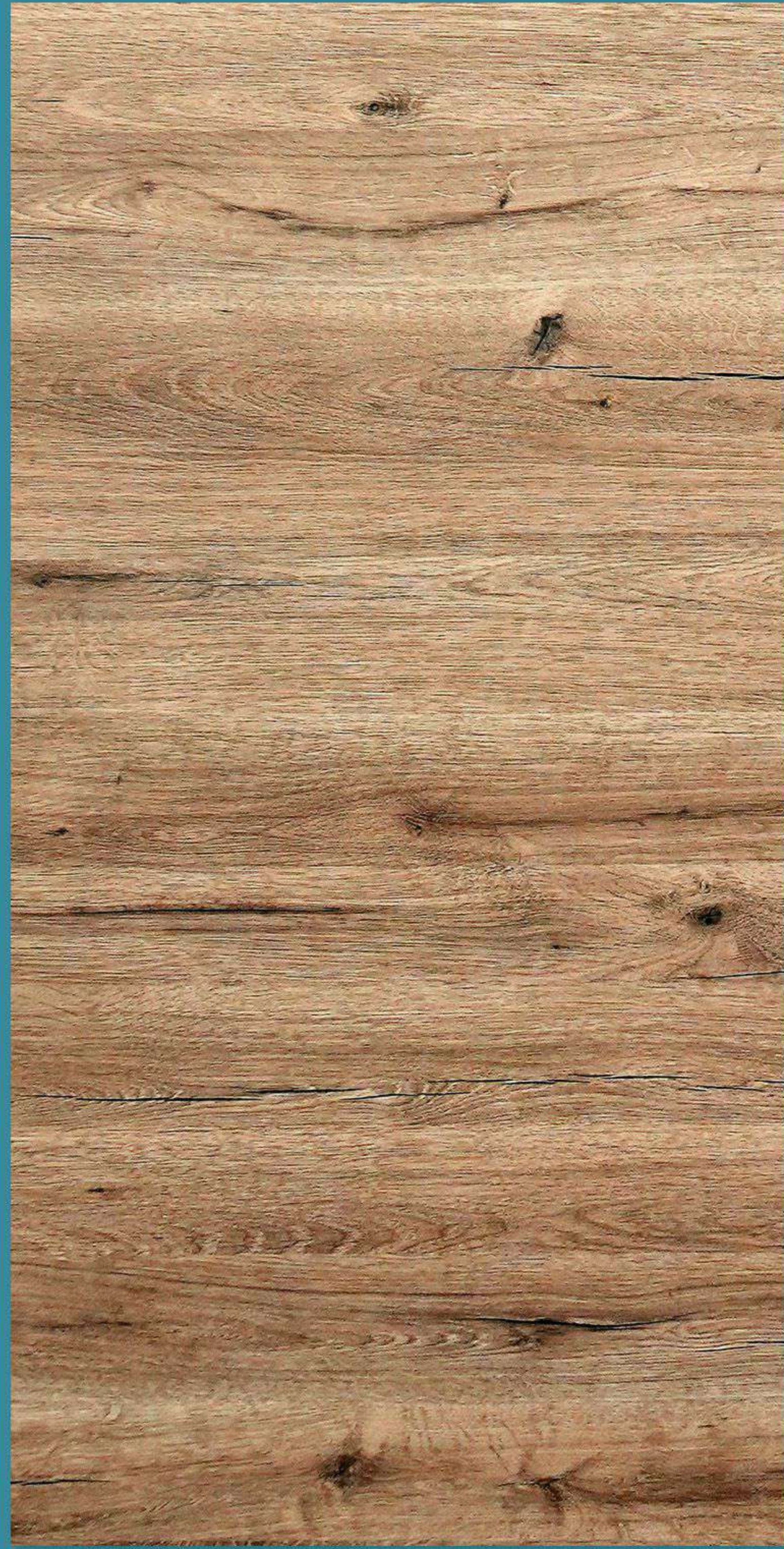


E 959/ 1959
IMPERIAL WALNUT

OAKS

OAK

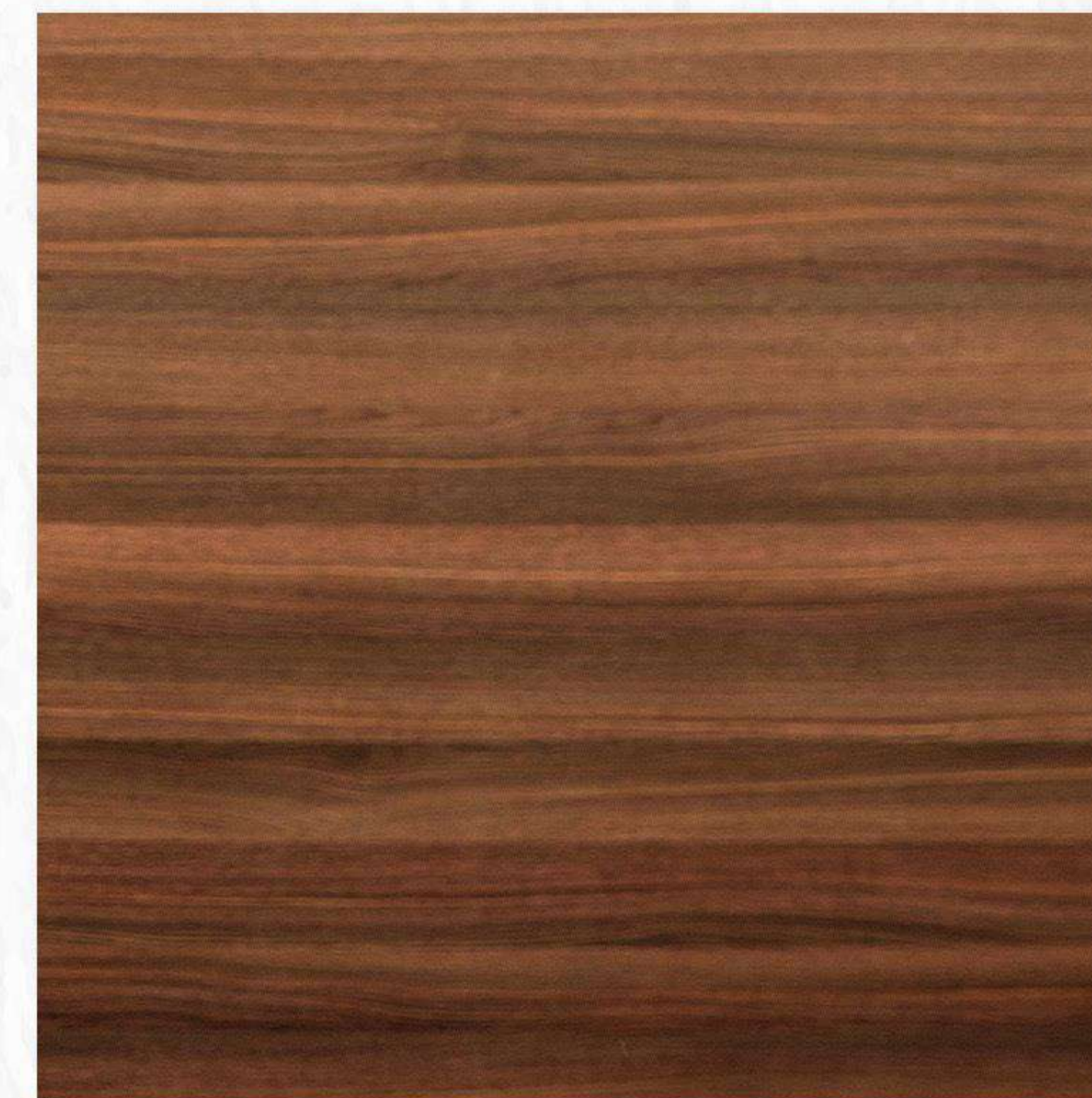
OAK



NEW WP 256
COASTAL OAK HUE



New WP 257
ROYAL OAK SPLENDOR DARK



WP 112
CHESTERFIELD OAK DARK



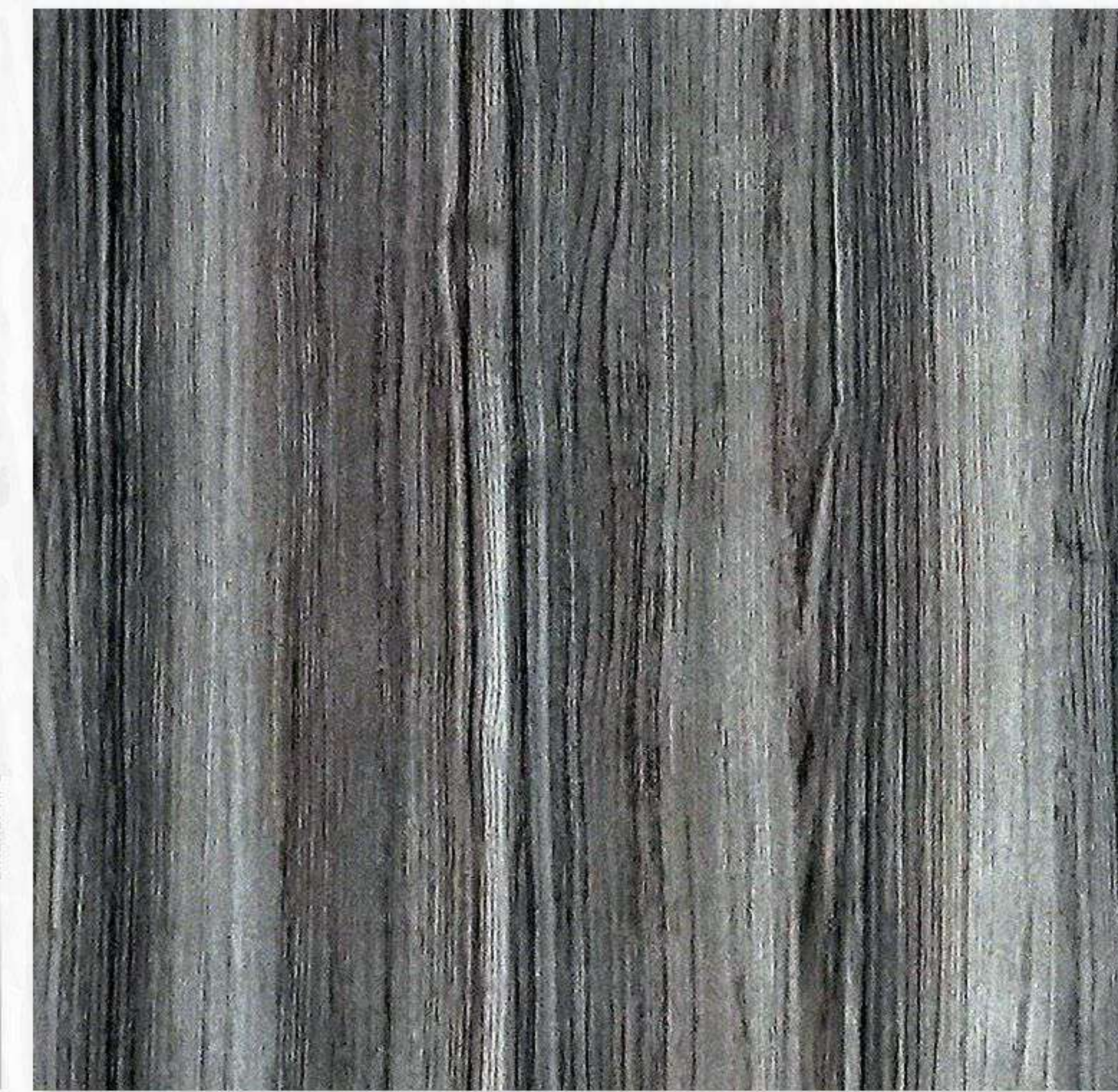
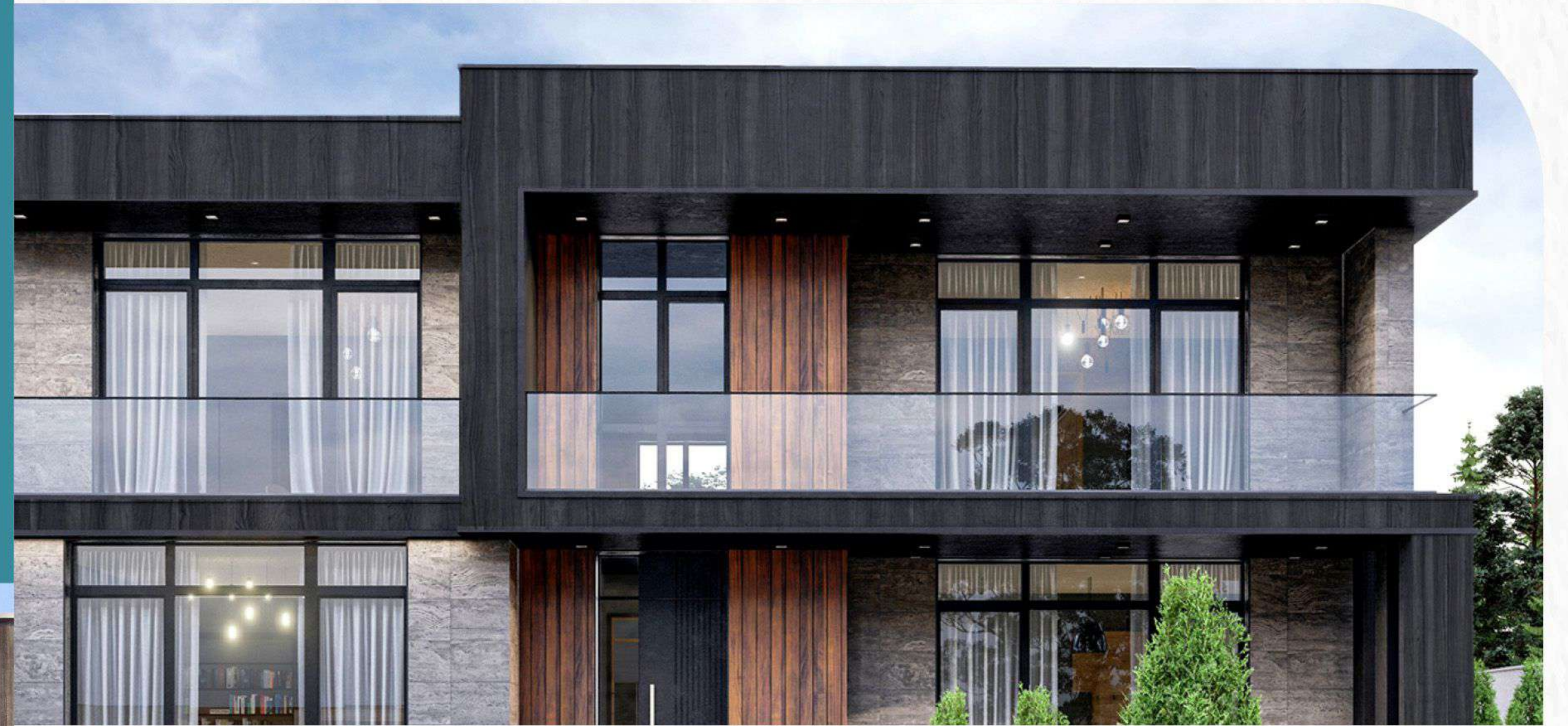
WP 113
STEIFFER OAK DARK

ASH

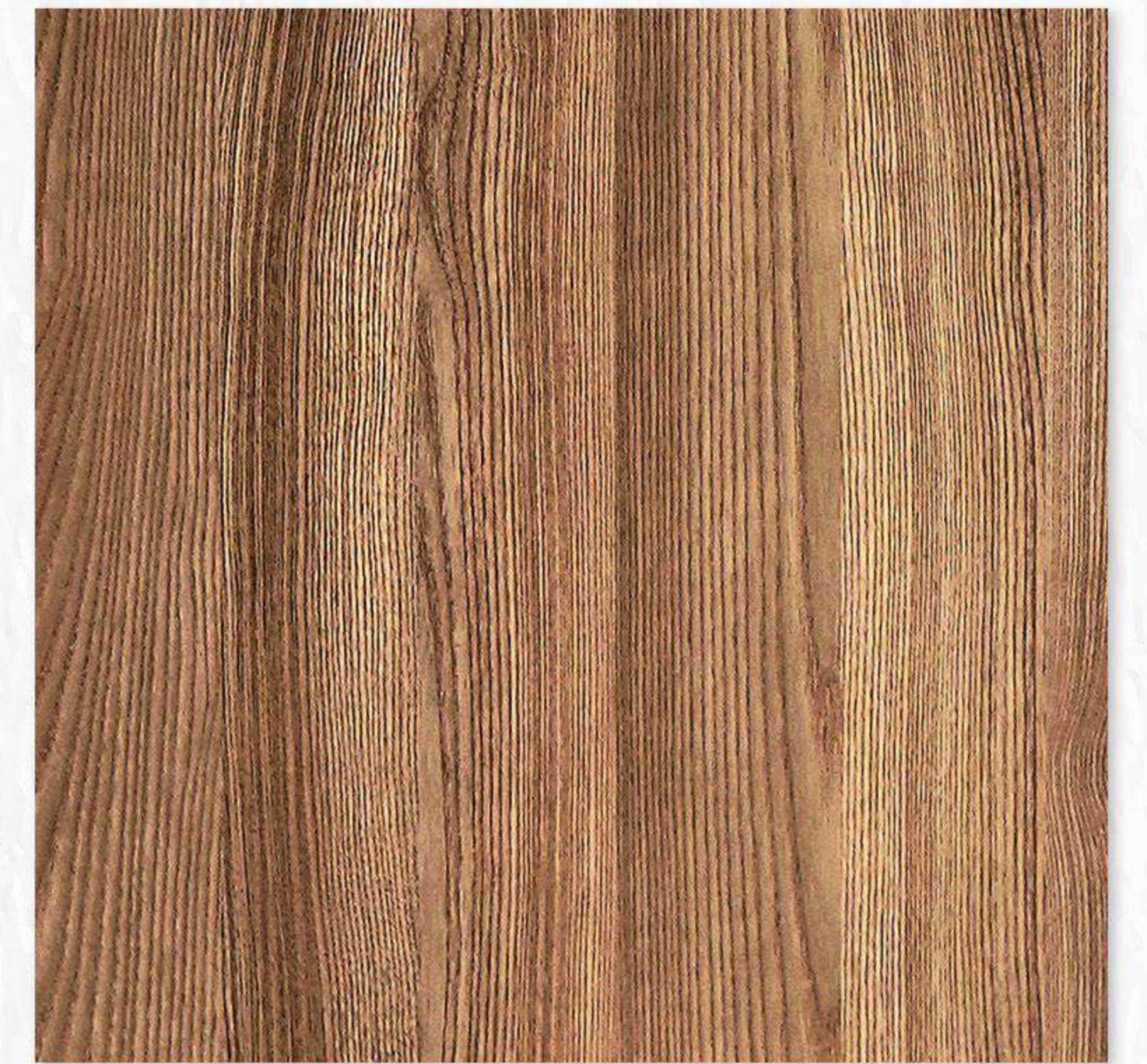
ASH



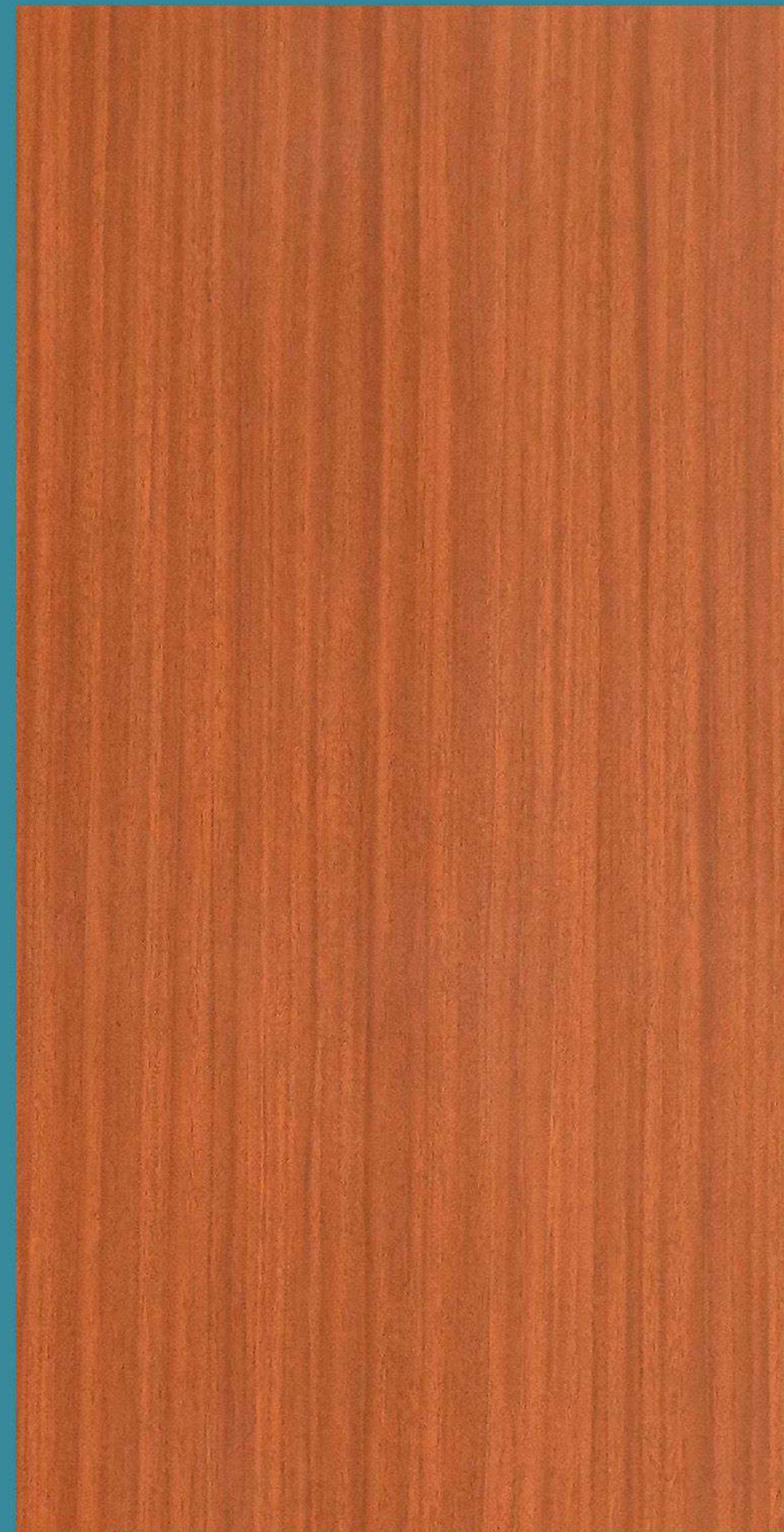
NEW WP 248
SILVA ASH



New WP 249
SILVA ASH DARK



WP 67
ALMERIA ASH SMOKED



SAPELI & MAHOGANY



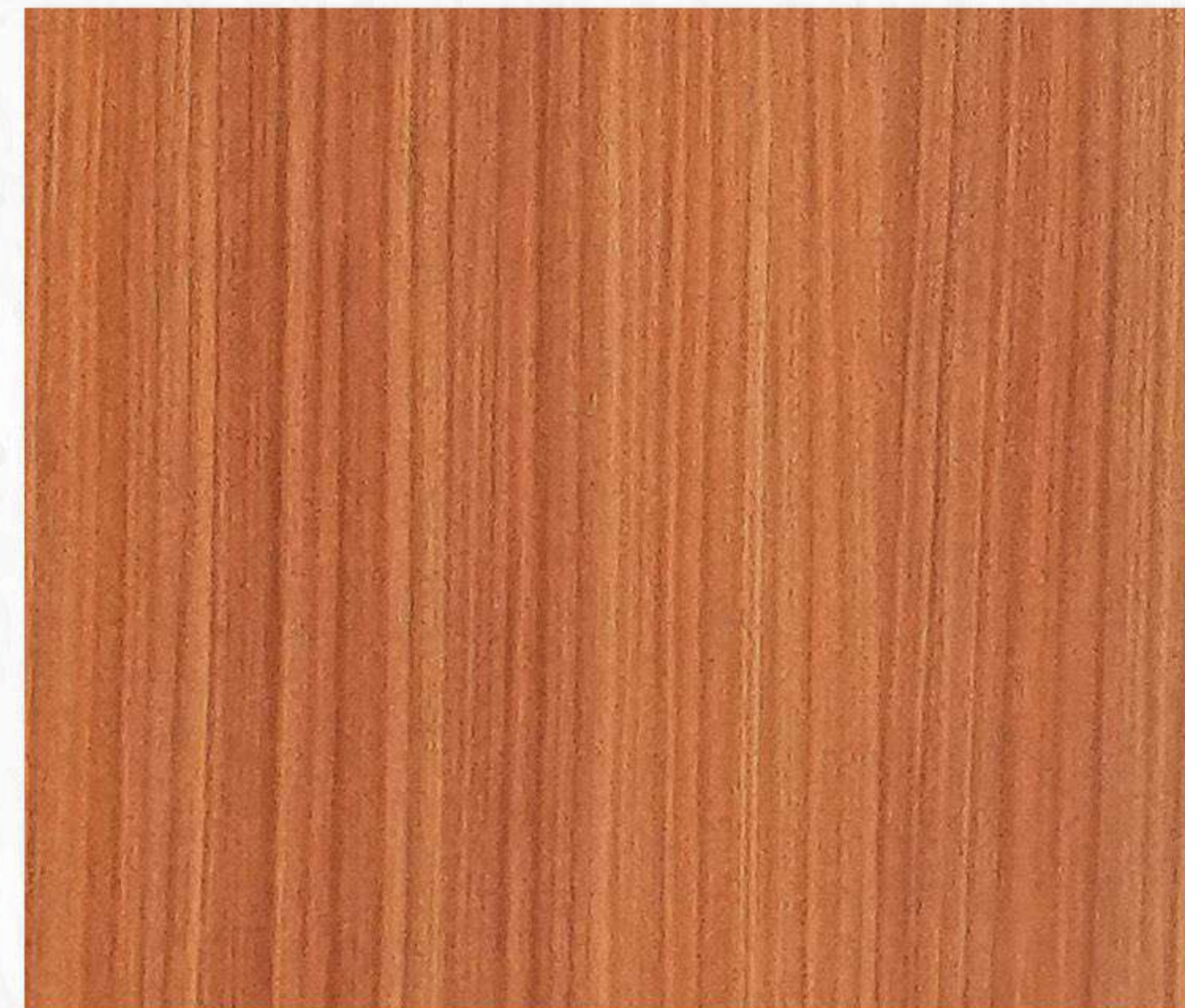
SAPELI

E 711/ 1711
SAPELI

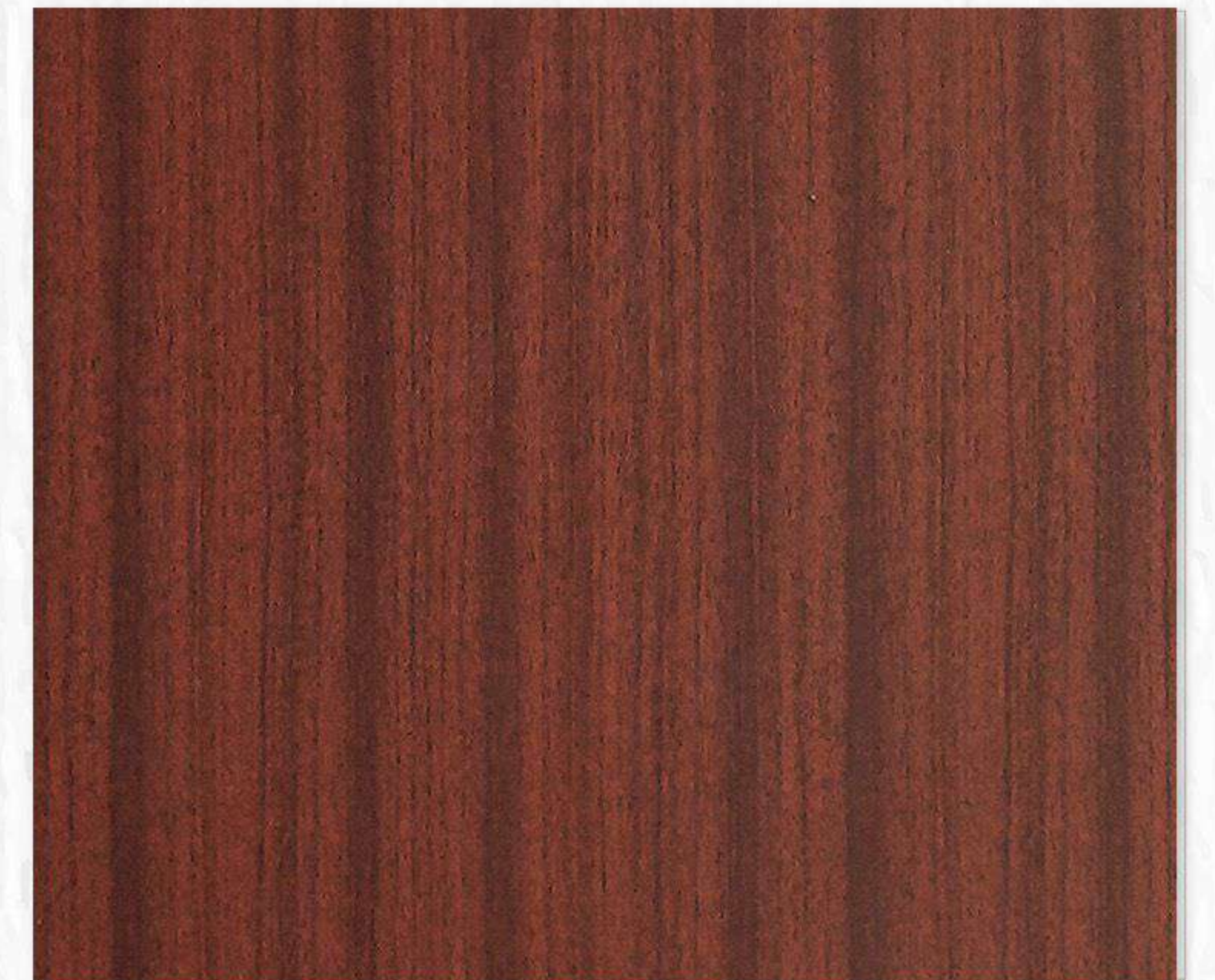


MAHOGANY

E 712/ 1712
MAHOGANY

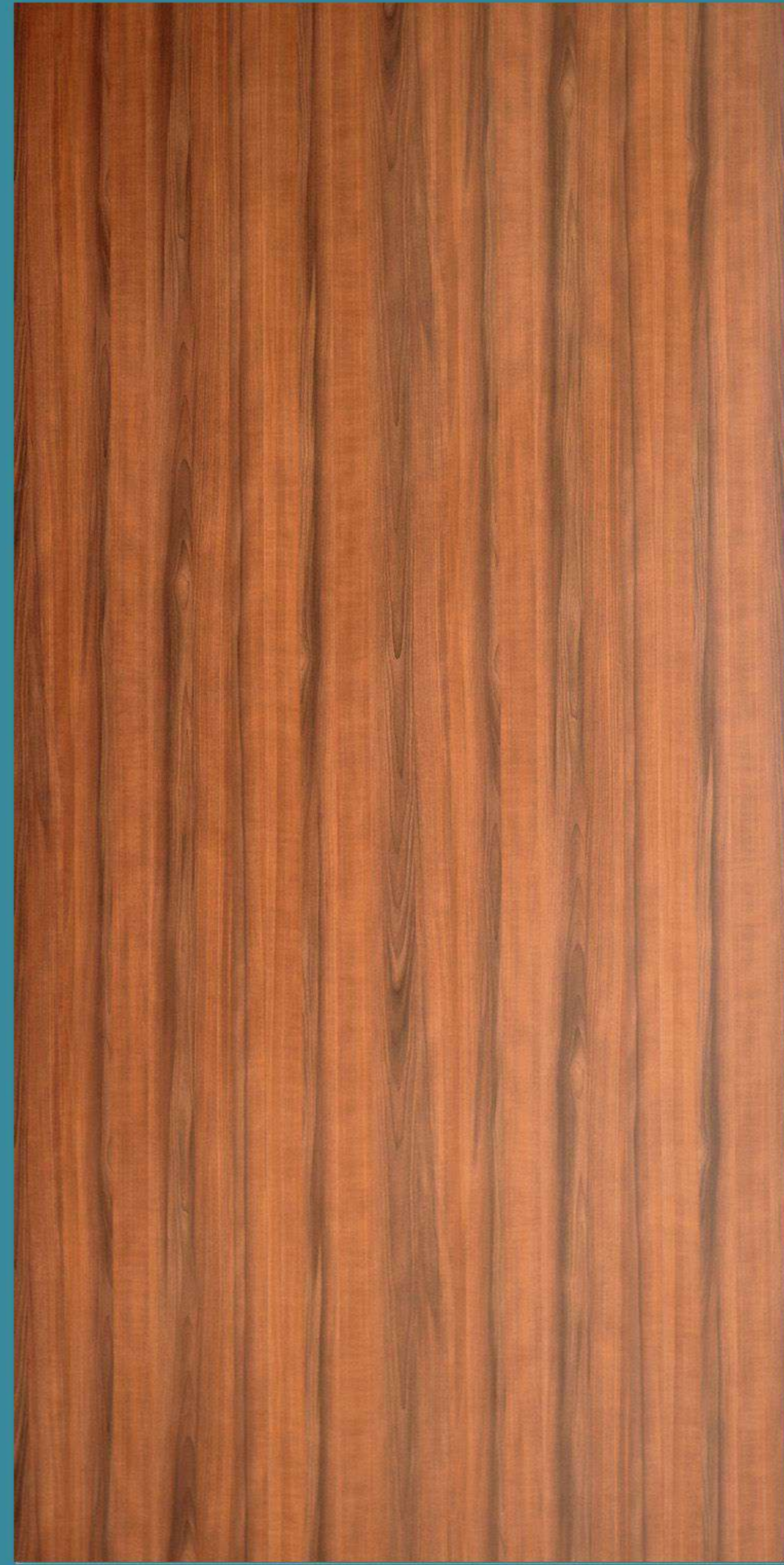
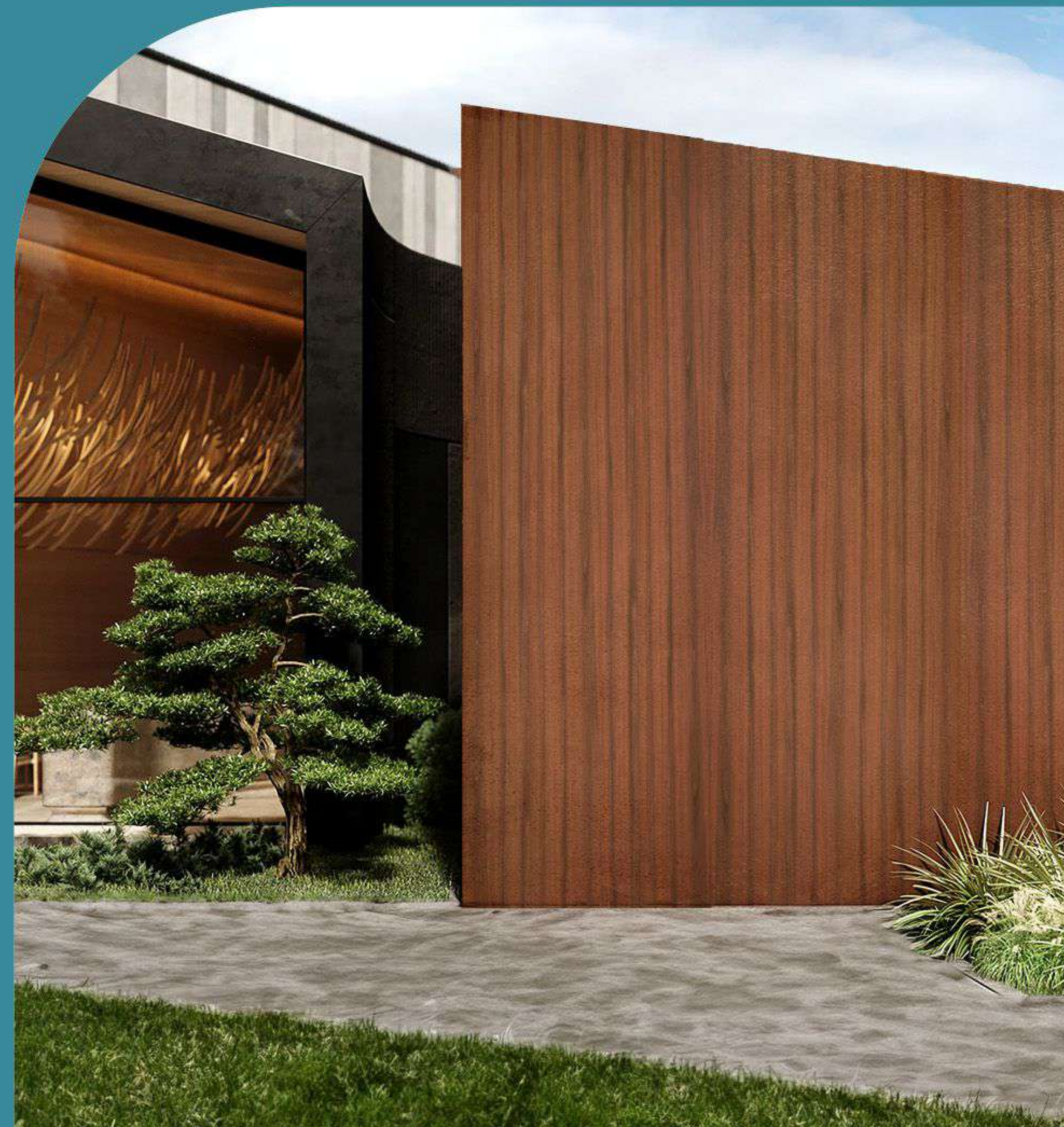


WP 80
SUPREME MAHOGANY

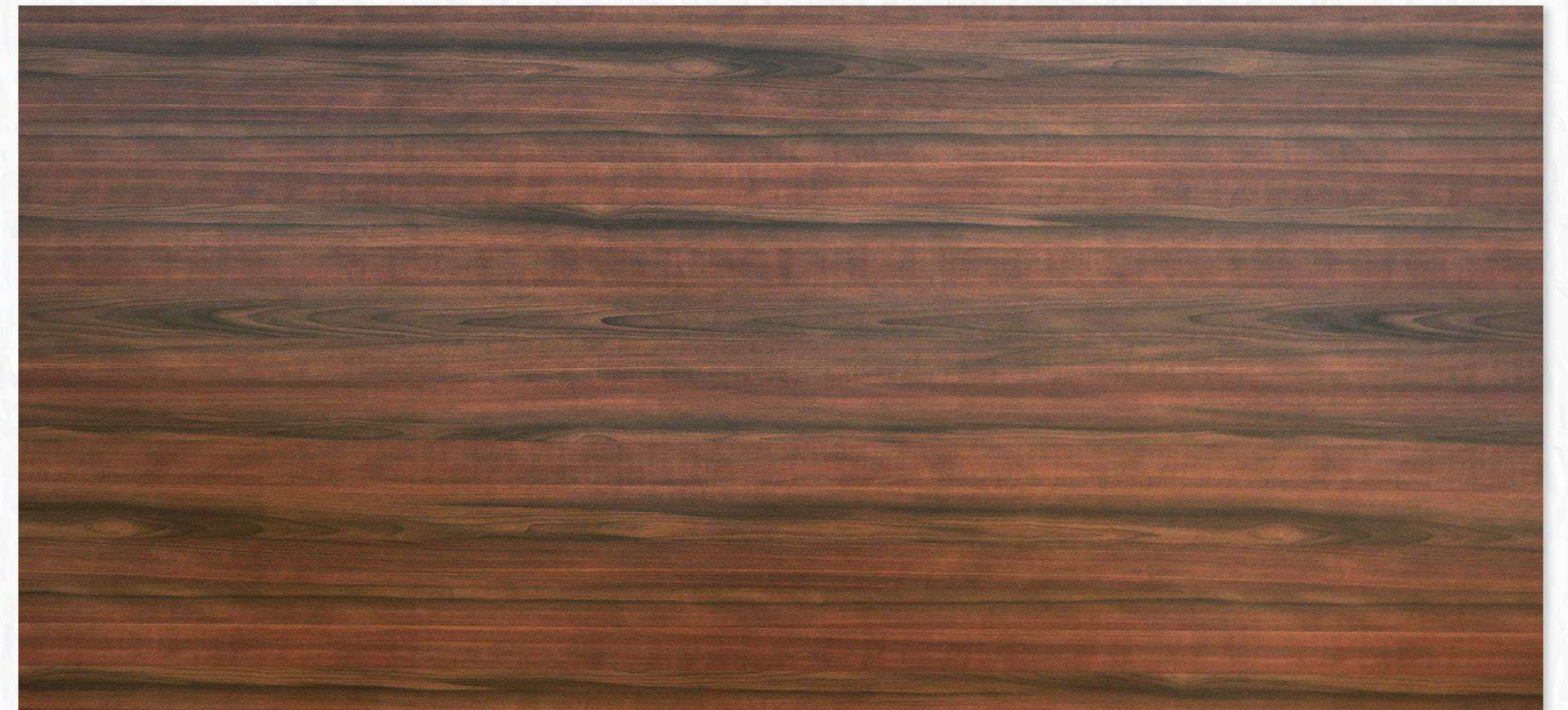


PEAR

PEAR
Pear



WP 102
VARELY PEAR BROWN



WP 103
VARELY PEAR DARK

UltraShield⁺
EXTERIOR WPC

UltraShield⁺
EXTERIOR WPC

Design Wood



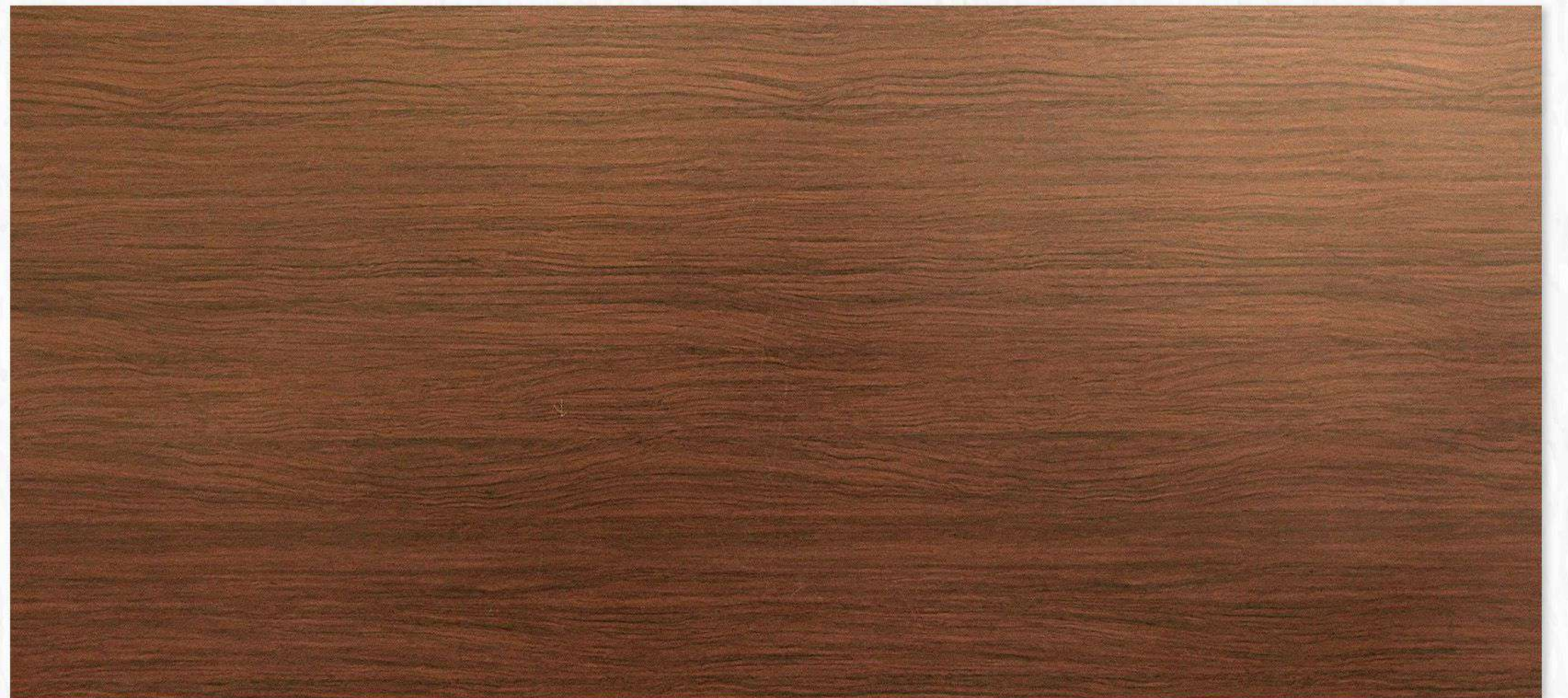
NEW WP 160
COLOBRA



DESIGN WOOD



New WP 198
LAKESHORE SMOKED



E 769/ 1769
GONCALO ALVEZ

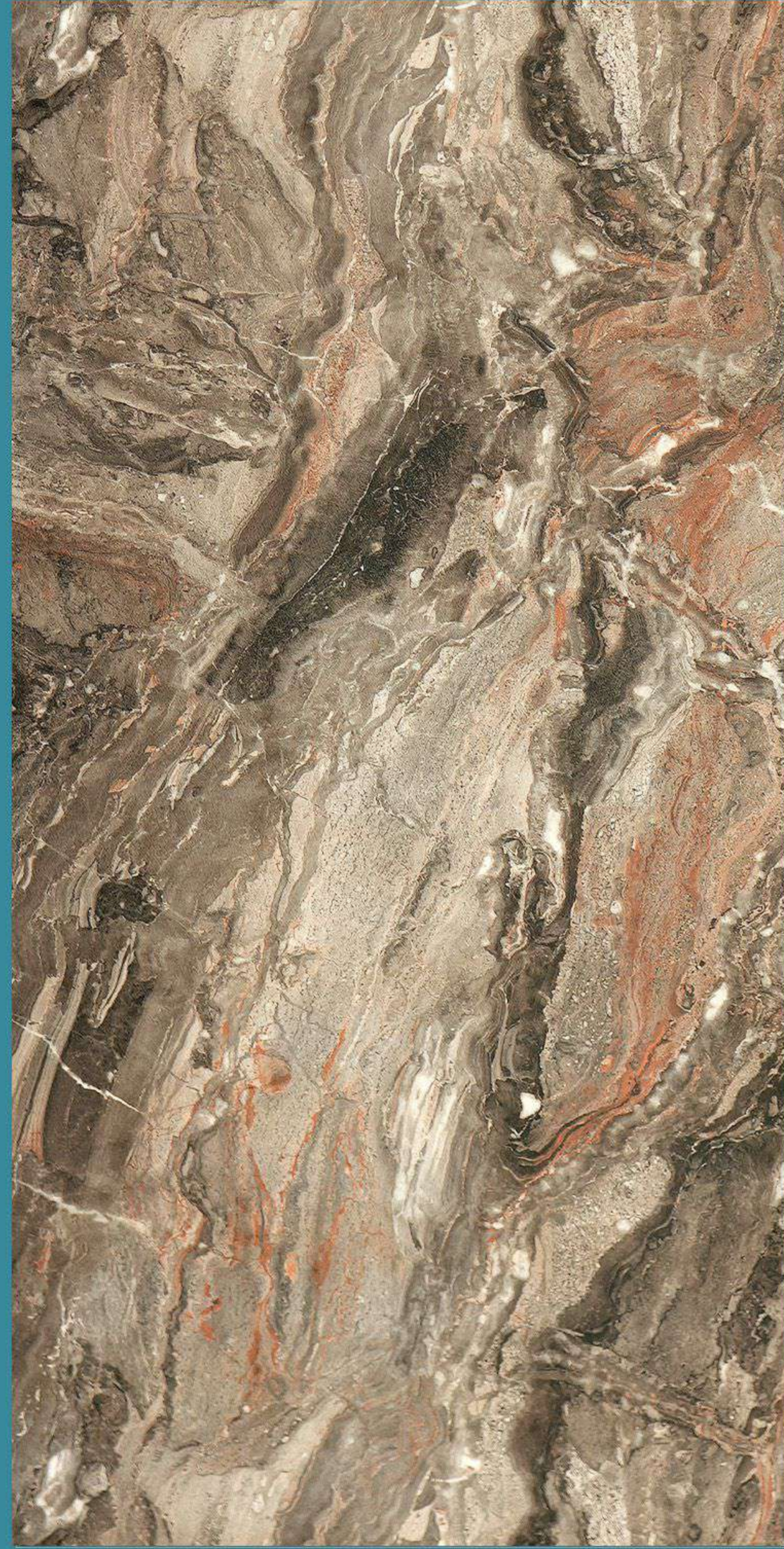


ABSTRACT

Abstract

STONE

Stone



NEW Y 680
ITALIAN MARBLE



New Y 659
TITANIUM BLACK



New Y 660
ORION

UltraShield⁺
Exterior HPL



Y 698
DARK SIDE WALK

UltraShield⁺
Exterior HPL



WP 158
ROMANO TRAVERTINE

UltraShield⁺
Exterior HPL



Y 699
GREY SIDE WALK



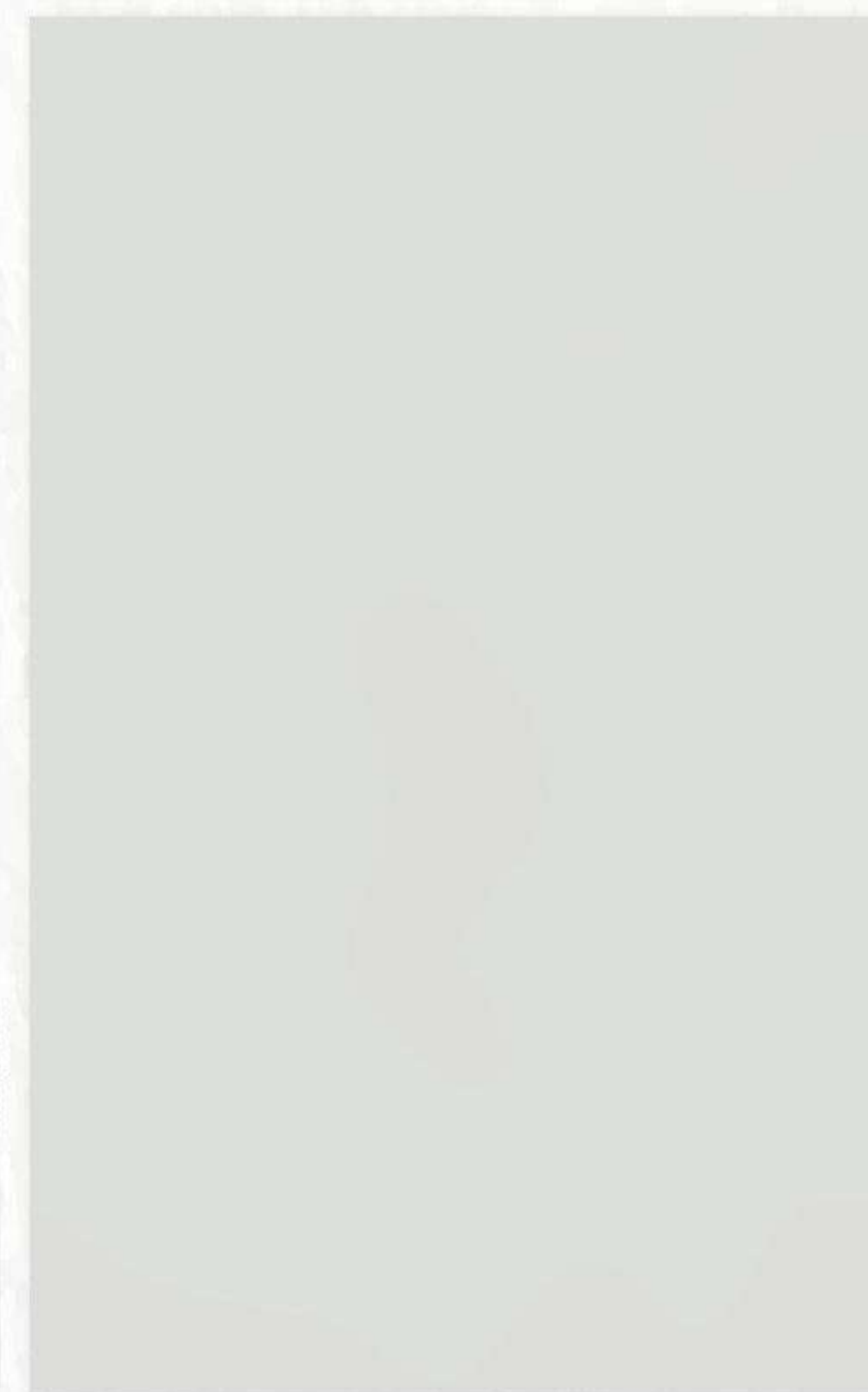
UltraShield⁺
Exterior HPL

SOLID

Solid

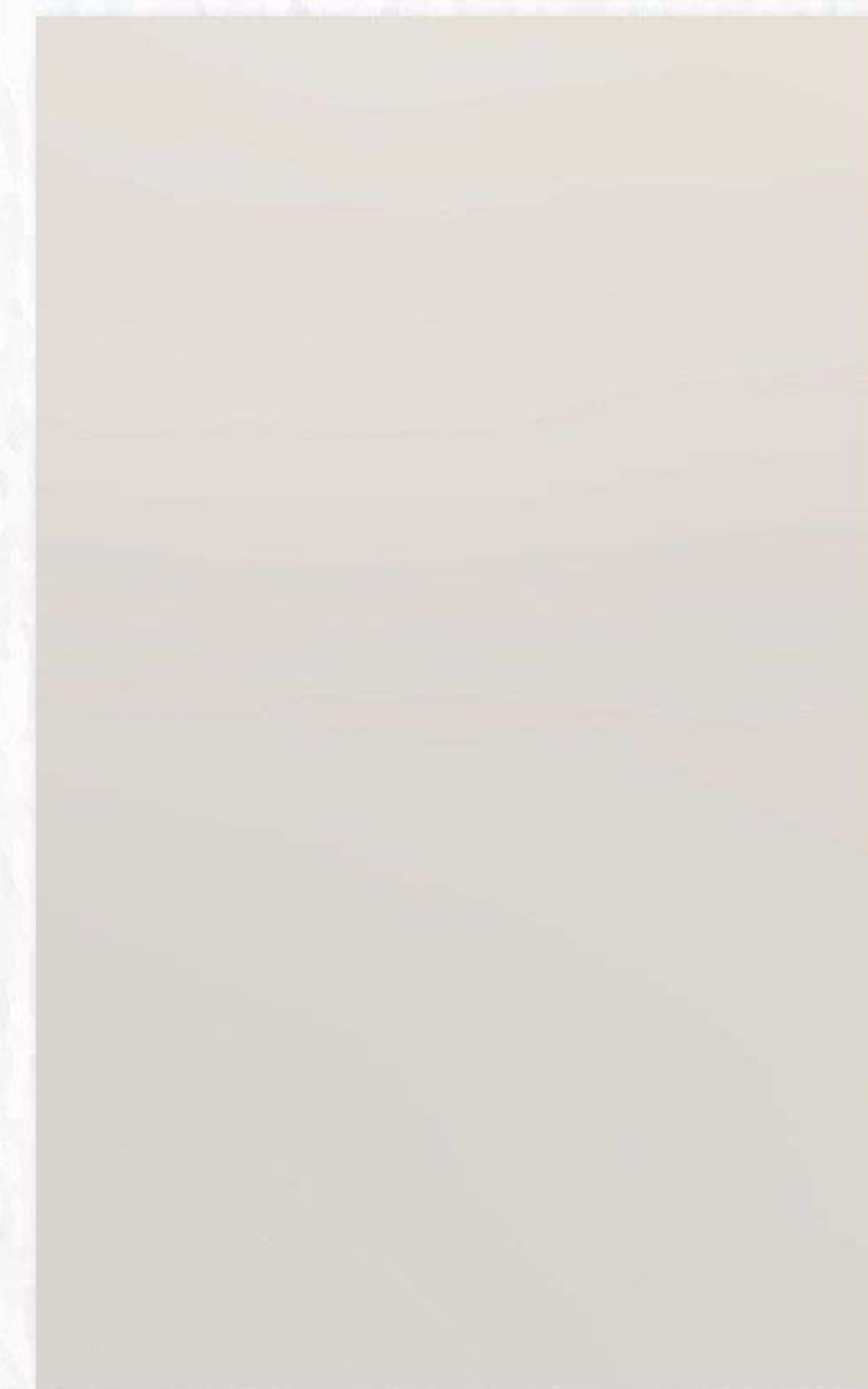


UltraShield⁺
Exterior HPL



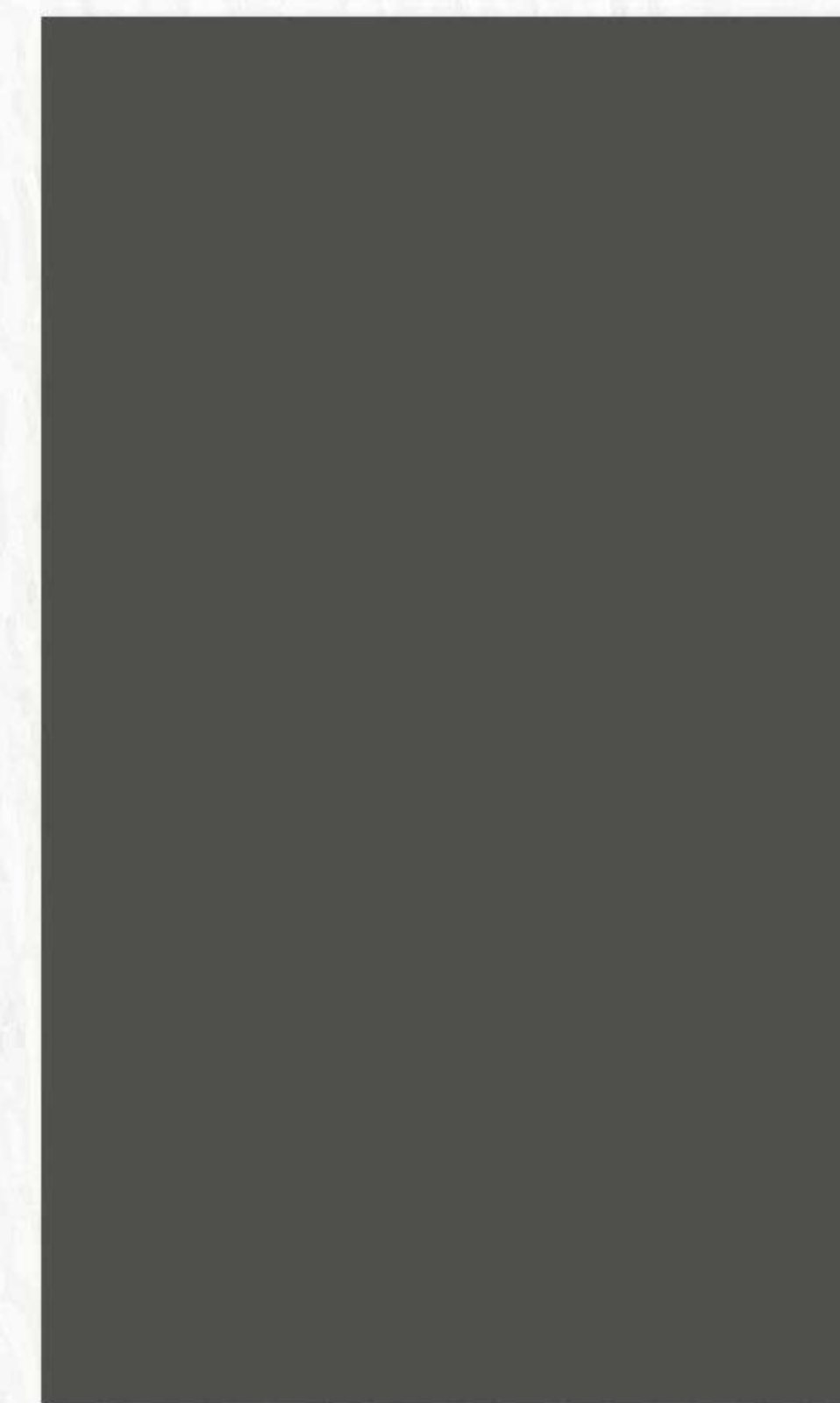
G 322/ 1322
ASH GREY

UltraShield⁺
Exterior HPL



G 522/ 1522
GOTHIC GREY

UltraShield⁺
Exterior HPL



G 567/ 1567
SLATE GREY

ULTRA SHIELD INSTALLATION SETUP



Finished wall

ULTRA SHIELD INSTALLATION GUIDE

ADHESIVE :

Adhesive system is simple system for rear ventilated facades and visible roof under faces. These systems require 50x25mm rectangular aluminium channel, 10x30 size SS screw, PU sealant, VHB structural glazing tape, PU primer black etc. PU sealant & VHB tape should have good quality and resistance to UV radiation.



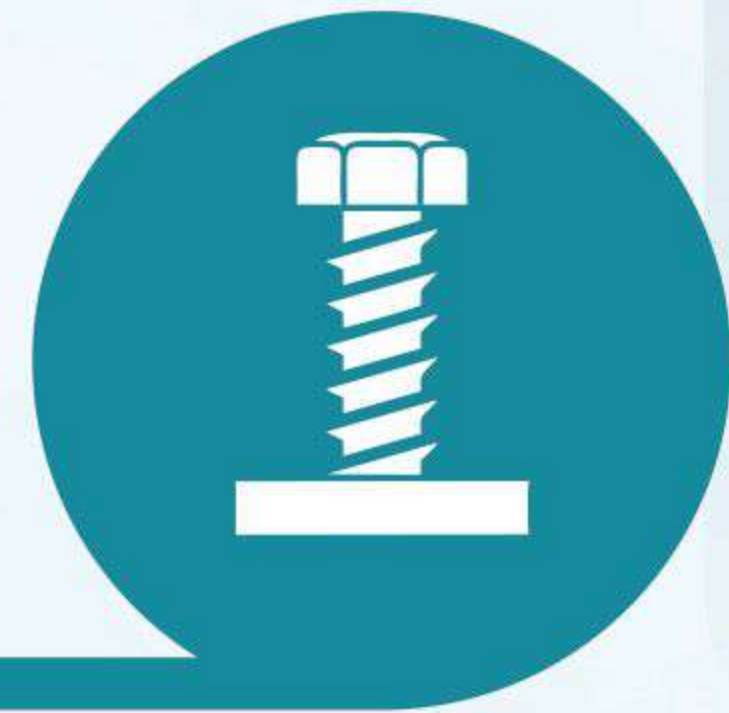
PROCESS:

- 1) Creation of Aluminium Structure:** Make 6mm thru hole from back side & 20mm from front side on aluminium rectangular channel for screw fixing with channel and wall. Then mark screw position on wall with the help of rectangular channel for wall plug fixing. While plug fixing, provide space approx. 450 to 600mm between two channels as well as between two fasteners. Keep minimum 15mm distance of channel alignment from floor, sides & ceiling of wall area. Fix all plugs (approx. 30mm) to the marked area. Fix all rectangular channels with wall with the help of 10x30mm size screw.
- 2) Surface preparation and priming:** Abrade (rough) both the bonding area (front side of the channel & backside of laminate surface) using either cleaning pad/scrubber/fine emery paper. Clean the roughed surfaces and apply black primer (recommended) on these bonding areas and allow to dry to leave a tack free film. Kindly note, primer coating on laminate backside surface is to be done just before bonding but before sealant application on the frame to get better bonding results.
- 3) VHB & Sealant application:** Paste VHB tape & PU sealant on front side of framed aluminium channel. Always apply VHB tape before sealant as there is skin formation on sealant bead if exposed long in air. Apply the sealant as a triangular bead of 6-8mm base and height approx. 10-12mm away from the tape.
- 4) Panel Cladding:** Align the compact laminate & fix the same on channel with the help of VHB channel & PU sealant. Apply pressure with a rubber roller or by hand. Kindly ensure proper alignment of panel before pressurized for bonding. Enough pressure should be applied so that both surfaces fully contact the tape. Fix other compact laminate in same fashion & maintain a minimum gap of 3-4mm between two compact laminate. Kindly note to achieve maximum bonding strength, minimum 24 hours is required for optimum curing after installation process.

2

RIVET:

Rivets are used in a panel mounting application to secure two or more components together. The rivet is easily installed with access only required from one side of the assembly. These systems require substructure (50x25mm rectangular aluminium channel), 10x30 size SS screw, POP rivets etc.



PROCESS:

1) Creation of Aluminium Structure: The aluminium substructure (standard specified) generally consists of vertical support profiles/hollow sections are mounted on the wall using rivets/angle brackets. Considering dimensional behaviour of laminate at relative humidity as well as effect of climatic temperature on metal sub-construction, there is need to make fixed points & sliding points to fix the panels.

a) Fixed points: Fixed points are used for uniform distribution & shrinkage movement. The diameter of the drill hole in Aica exterior clad must measure 5 to 6mm.

b) Sliding point: The diameter of drill hole in Aica exterior cladding must be larger than the diameter of the fastening as per required expansion clearance. Thus is the shaft diameter of the fastening plus 2mm for every meter of cladding material from the fixed point. The head of the fastening must be big enough so that the hole in exterior clads is always covered.

Procedure: Make 6mm thru hole from back side and 20mm from front side on aluminium rectangular channel for screw fixing with channel and wall. Then mark screw position on wall with the help of rectangular channel for wall plug fixing. While plug fixing, provide space approx. 450 to 600mm between two channels as well as between two fasteners. Keep minimum 15mm distance of channel alignment from floor, sides & ceiling of wall area. Fix all plugs (approx. 30mm) to the marked area. Fix all rectangular channels on the wall with the help of 10x30mm size screw.

2) Panel Cladding: Mark the holes in the aluminium triangular substructure as well as in laminate panel for the rivet fixing. Make the drill in the compact laminate for Rivet fixing. While marking, keep rivet space in-between 20-80mm distance from corner as well as maintain minimum 450 to 600mm space in-between two Rivet. Compact laminate is then fixed with Rivet using Rivet gun on aluminium substructure. Fix the other panels in same fashion with maintaining a minimum gap of 3mm in-between two panels.

Important Note: Using rivets system, the mouthpiece drilling on the centre of the plate is opened with the same diameter as the rivet, other holes are opened 2-3 mm wider than the rivet diameters, thus enabling movement of clad panels in case of expansion. The placement of the holes should be minimum 20 mm & maximum 60mm distance from the plate edge and distance maximum 10 times of the material thickness.

3

Z-CLIP:

A Z-clip system involves installing clads on the wall structure (lip-up) and strips/clips on the back of the panel (lip down). Once the panel is "dropped" into place, blocking at the top of the panel keeps the compact laminate from being removed. This system required 50x25mm rectangular aluminium channel, Z-clip, 10x30 size SS screw, 8x6mm SS Screw etc.



PROCESS:

Creation of Aluminium Structure Using Z-clip:

Make 6mm thru hole from back side & 20mm from front side on aluminium rectangular channel for screw fixing with channel and wall. Then mark screw position on wall with the help of rectangular channel for wall plug fixing. While plug fixing, provide space approx. 450 to 600mm between two channels as well as between two fasteners. Keep minimum 15mm distance of channel alignment from floor, sides & ceiling of wall area. Fix all plug (approx.30mm) to the marked area. Fix all rectangular channels with wall with the help of 10x30mm size screw. Fix Z-clip on rectangular channel with the help of 8x6mm SS screw.

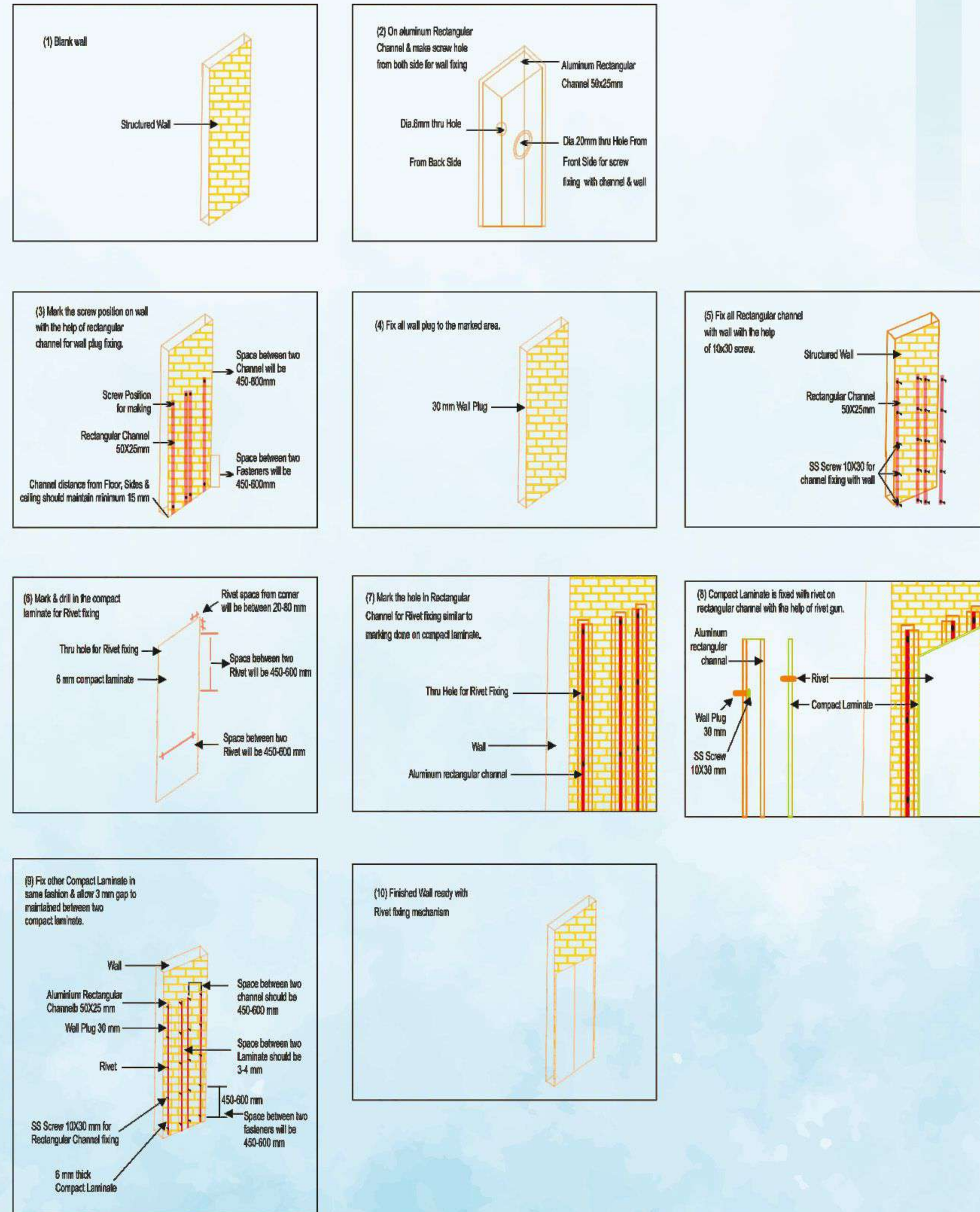
Keep minimum 450 to 600mm space in-between two Z-clip. Fix Z-clip on another side of exterior laminate in reverse fashion with the help of 8x6mm size SS screw. Then with the help of Z-clip, slide or hang laminate panel on framed rectangular channel. Fix all other laminate panels in same fashion with maintaining a minimum gap of 3mm in-between two compact laminate.

Important note in all above three procedures:

An efficient air circulation must be secured between Aica exterior wall cladding and the surface or the coating of the building. The blank grouting spaces allowed for ventilation between the plates should not be filled with any material. An efficient air circulation must be provided from the ground level of the plate to the top edge. A minimum of 50 cm² space is required for every 1 meter width. If no air ventilation gap is reserved at the construction framework, deformation will occur on the exterior plates.

CLADDING LAYOUT

This diagram explains how to install Ultra Shield on the wall, making the installation process easy.



EFFICIENT MATERIAL HANDLING SOLUTIONS

Seamlessly manage and store materials with our integrated systems that ensure efficiency and reliability.



Storage and Handling:

Use pallets during transportation of Outdoor wall cladding panel. The surface should be free from debris, grit or foreign bodies to protect the decorative surface. Avoid pushing of panels over one another. Always cut the panels with the long edge parallel to the length of the panel.

Ambient Conditions:

As far as possible try to maintain the same ambient conditions on both sides of the panel. Outdoor wall cladding sheets should be stored horizontally on a flat board with sufficient weight on top to keep the sheets flat. Cover the cladding sheets with a material impervious to water.

Fabrication Conditions:

Use proper tooling while working with Outdoor wall cladding, use spindle moulder or router to achieve a superior finish or a profiled edge. Cutter marks cannot be avoided completely but can be minimized feeding the work at a constant controlled speed. The edges of cladding should be chamfered to reduce the risk of edge impact damage.

Technical Specification

Technical Data For 'Ultra Shield, External Wall Cladding

ULTRASHIELD, EXTERNAL WALL CLADDING Compact laminate grade is a specially formulated laminate for exterior application. This product meets all properties as per BS EN 438-6:2016 Grade EDS & EDF materials. This grade is tested according to EN 438-2.19 & EN 438-2.29 for weather resistant properties as well to EN 13501-1 for fire resistant properties required for exterior grade application.

Exterior laminate is made with special type of synthetic polymers with acyclic coating technique provides superior weatherability, excellent UV-absorbance and heat lamination performance.

Properties and Typical Test Values for 6.0mm D/S Size 8'x4' laminate sheet.

Sr No.	Property as per EN 438-6:2016	Test Method (EN 438-2, Clause no.)	Unit	Requirements	Typical Value Grade EDF
1. Surface quality					
1.1	Dirt, spots and similar surface defects	4	mm ² /m ²	≤ 2	≤ 2
1.2	Fibers, hairs and scratches	4	mm ² /m ²	≤ 20	≤ 20
2. Dimensional tolerances					
2.1	Thickness for 6.0mm	5	mm	+/-0.40	+/-0.40
2.2	Flatness	9	mm ² /m	≤ 5	≤ 5
2.3	Size for 2440mm(L)x1220mm(W)	6	mm	#DIV/0!	#DIV/0!
2.4	Straightness of edges	7	mm ² /m	≤ 1.5	≤ 1.5
2.5	Squareness	8	mm ² /m	≤ 1.5	≤ 1.5
3. Physical Properties					
3.1	Flexural Modules	EN ISO 178:2003	MPa (min)	9000	> 9000
3.2	Flexural Strength	EN ISO 178:2003	MPa (min)	80	> 80
3.3	Tensile Strength	EN ISO 527-2:1996	MPa (min)	60	> 60
3.4	Density	EN ISO 1183-1:2004	g/cm ³	≥1.35	≥ 1.35
3.5	Resistance to Impact by large diameter ball (Drop height)	21	mm (min)	1800	>1800
3.6	Resistance to wet conditions	15	% (max) Mass increase	< 8	< 8 (EDF)
3.7	Dimensional stability @ elevated temperature (Cumulative dimensional change)	17	% (max)	< 0.30 (L) < 0.60 (T)	< 0.30 (L) < 0.60 (T)
4. Weather resistance requirements					
4.1	Resistance to Climatic shocks	19	Rating (min)	4	4
4.2	Resistance to UV light	28	Gray scale Rating (not <3)	3	>3 (1500hrs exposure)
	Rating (min)		4	4 (1500 hrs exposure)	
4.3	Resistance to artificial weathering (including light fastness)	29	Gray scale Rating (not worse than 3)	3	>3 (after 625 MJ/m ² radiant exposure)
	Rating (min)		4	4(625MJ/m ²)	
5. Fire Performance					
		EN 135 01			
5.1	Fire reaction classification	EN 13823 (CSBI test) EN ISO 11925-2 (small burner test)	Classification	B-s2,d0	B-s2, d0 (EDF)

The figures in this table are typical measured values, not the values for guaranteeing. In case of any claims, the liability of the company is however limited to the cost of the product only.

AICA LAMINATES INDIA PVT. LTD.

Plot No. 23 to 26 & 45 to 48, Sector No-5, IIE- Pant Nagar Industrial Estate, Rudrapur-263153 (U.S. Nagar) Uttarakhand.

All Pictures are for illustrative purposes.

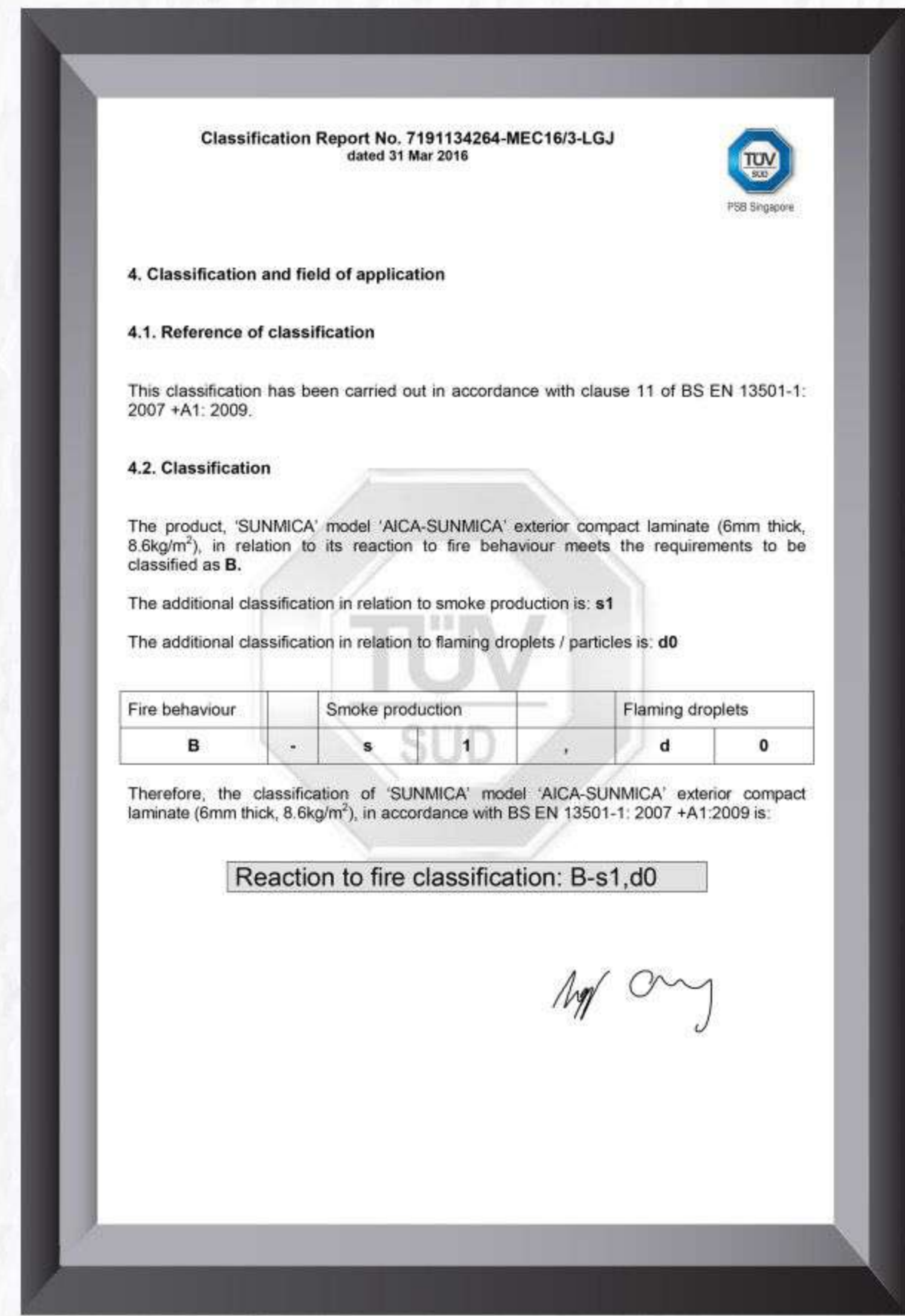
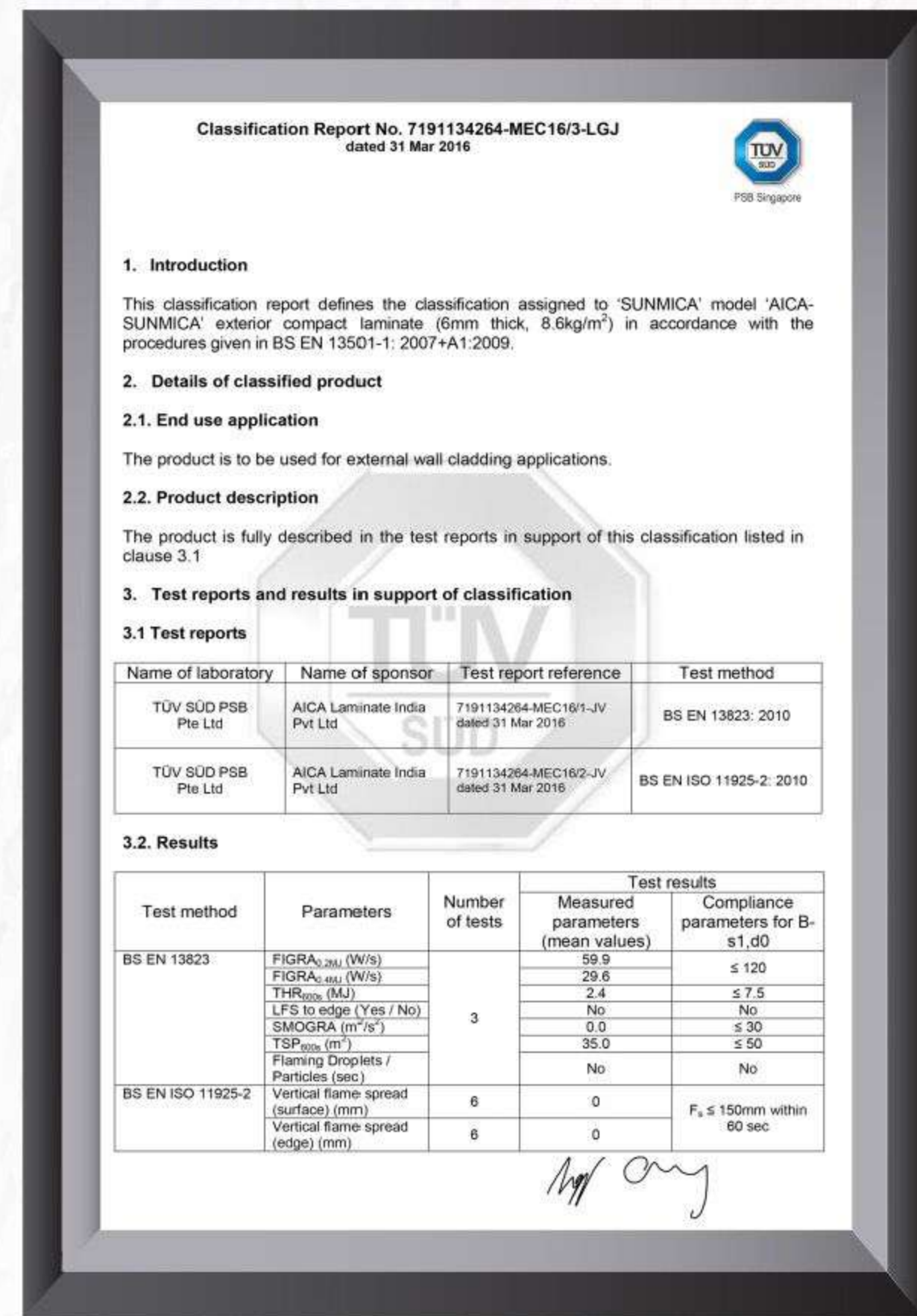


Weather Resistance CERTIFICATE





Fire Performance CERTIFICATE



CARE AND MAINTENANCE

To clean the surface, use a damp cloth or sponge and a mild soap or detergent. The use of cleaners containing abrasives, acids or alkalis may damage the decorative surface. Being anticorrosive and antibacterial in nature of cladding, there is no special maintenance apart from cleaning is required.



AICA LAMINATES warrants to the original consumer purchaser for 10 year color fastening warranty after date of purchase ("Warranty Period") that, under normal use and service, exterior laminate sheets are free from manufacturing defects and conform to the properties as per specification of EN438 part 6:2016 standard & with the subject to following conditions.

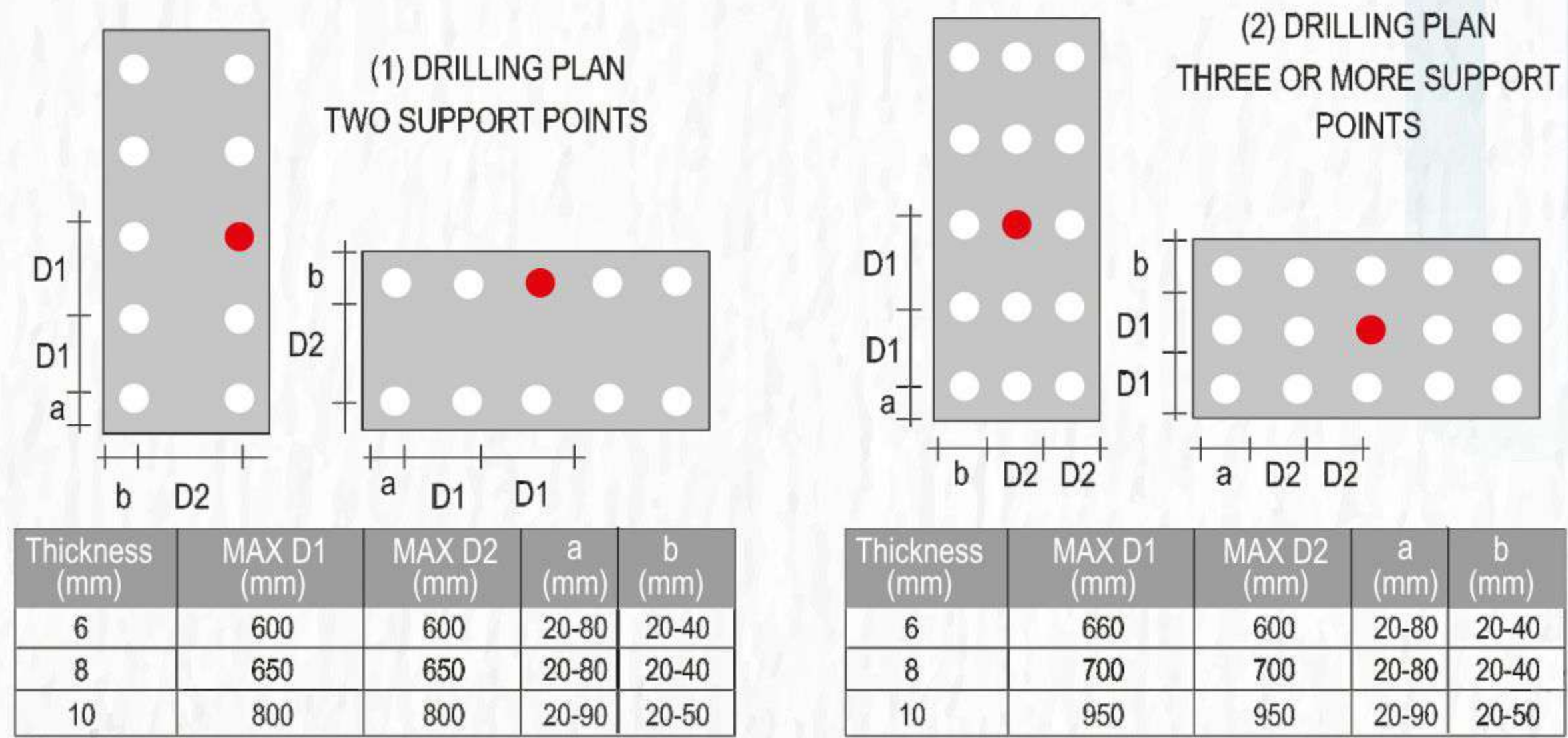
Slight homogenous variations & slight loss of brightness may take place in course of time of use & is acceptable as per EN438 part 6.

This warranty applies only to a Exterior Laminate Sheet purchaser.

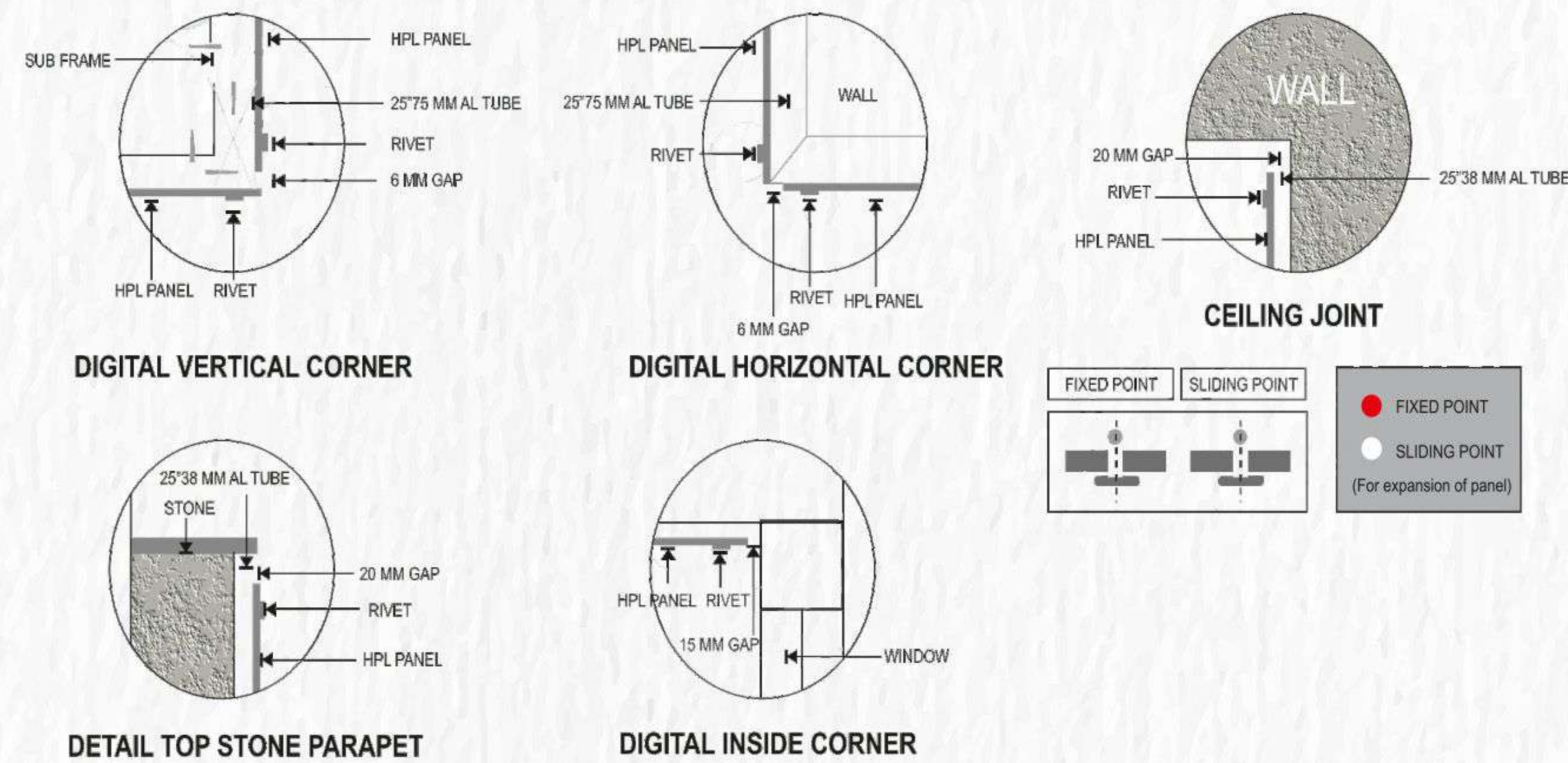
THIS WARRANTY IS NOT TRANSFERABLE. This warranty is expressly conditioned upon submission of proof of date of purchase.

This warranty shall not apply to damage arising from improper fabrication or installation, exposure to the extreme temperatures, improper maintenance or repair, accidents, abuse or misuse.

DRILLING PATTERN



INSTALLATION SYSTEM



BRANCH OFFICES AND CONTACT

Ahmedabad	T: (079) 27541749, 27541390, M: 9327403349	ahmedabad.sales@aicaindia.in
Bangalore	T: (080) 22278239, 22224404, M: 9379235101	bangalore.sales@aicaindia.in
Bhubaneswar	M: 9711610478	hyderabad.sale@aicaindia.in
Cochin	M: 9379235101, 9379679424	bangalore.sales@aicaindia.in
Chennai	T: (044) 26690005, 42825673, M: 9380283698	chennai.sales@aicaindia.in
Coimbatore	M: 9380283698	chennai.sales@aicaindia.in
Chandigarh	T: (011) 45006187, M: 9316005374	pardeep.mookerjee@aicaindia.in
Delhi	T: (011) 45006187, M: 9310690170	delhi.sales@aicaindia.in
Guwahati	M: 9332089859	kolkata.sales@aicaindia.in
Hyderabad	M: 9346301095	hyderabad.sales@aicaindia.in
Indore	M: 09329733901	indore.sales@aicaindia.in
Jaipur	T: (011) 45006187, M: 9310690170	delhi.sales@aicaindia.in
Kolkata	T: (033)23740087, M: 9332089859	kolkata.sales@aicaindia.in
Lucknow	M: 9368104802	lucknow.sales@aicaindia.in
Mumbai	T: (022)25771097, 25771812, M: 9325157311	mumbai.sales@aicaindia.in
Pune & Nagpur	M: 9730644455	pune.sales@aicaindia.in
Patna	M: 9711610478, 9835884449	durgesh.ratan@aicaindia.in
Raipur	M: 9332089859	kolkata.sales@aicaindia.in
Ranchi	M: 9711610478	kolkata.sales@aicaindia.in
Rudrapur	M: 9410170245	anand.singh@aicaindia.in